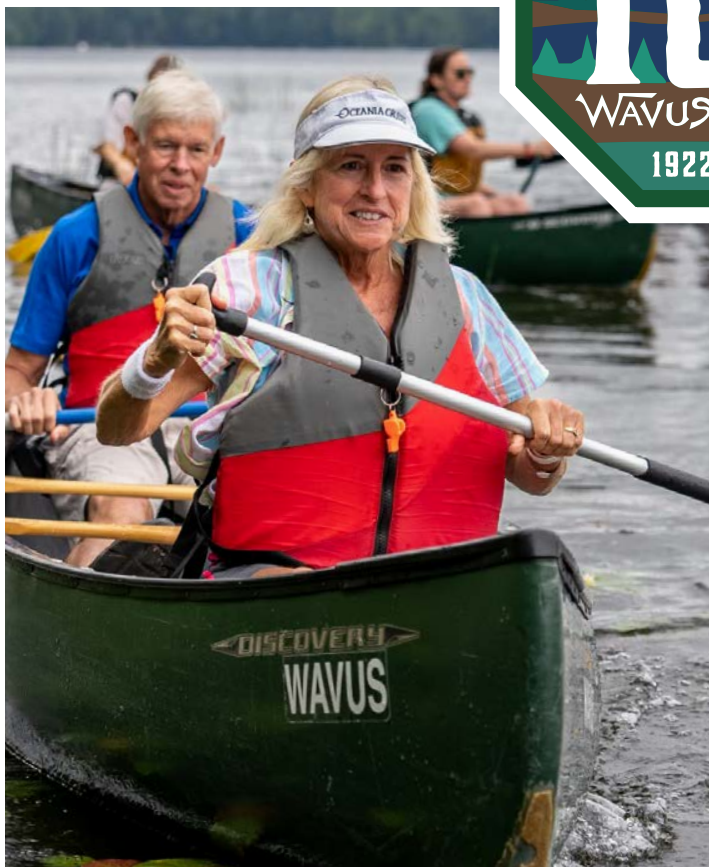


# KIEVE WAVUS NEWS





# In This Issue

---

- 1 Letter from the Executive Director
- 2 Community and Belonging
- 4 Forget-Me-Not: The Wavus 100
- 7 James Burk Honored with Wavus Paddle  
The Inaugural KW-E Swim
- 8 Trips to Canada with Camp Kapitachouane
- 10 2022 Annual Dedications
- 12 Meet Director of The Leadership School Hannah Lovejoy
- 15 Fall 2022 Event Highlights
- 16 Kennedy Learning Center 2.0
- 17 KWE's EASEL Curriculum Now Accessible to Educators Nationwide
- 19 Paddle and Thistle Society In Memoriam Trustees
- 20 Alumni News





# LETTER FROM THE EXECUTIVE DIRECTOR

**W**hat a summer it was! In just 52 days, 1,191 campers in 107 cabin groups made lifelong memories at Kieve and Wavus, building inseparable bonds in the Maine wilderness, while 261 counselors, directors, and staff members gave all they had to help those campers grow more independent and resilient.

At the end of August, we capped Wavus's 100th anniversary with a fantastic centennial celebration, during which we made a collective commitment to honor our history by looking toward the future. As I outlined in the spring issue of this newsletter, KWE's committed to growing more diverse, more accessible, and more intentional as we prepare our campers, counselors, students, and educators to contribute to the world beyond Damariscotta Lake. Elsewhere in this issue, you'll read about KWE's efforts to become more expansive in whom we serve as we lay the foundation for the next 100 years.

As I reflect upon our past accomplishments and consider how to achieve our future goals, I find myself returning again and again to the most important part of our camps: the counselors we entrust to lead our children. Our staff create that camp magic you hear about all year long. They make Jewell and Pasquaney feel like rock concerts during announcements after meals. They listen while managing cabin conflicts, and they console homesick campers. They model perseverance on the Mud Pond portage, motivating everyone to push through more muck and adversity than they thought possible.

Summers spent at Wavus and Kieve are transformational experiences because of the counselors who work here.

But too often I hear from our counselors they can't come back next year because of a nebulous pull to the so-called "real world." I can't help but wonder why. No Fortune 500 internship teaches the persuasion skills learned by convincing a cabin of second-graders to enjoy spending an hour cleaning their cabin for Sunday inspection. No manager anywhere demands their summer intern meet expectations as high as those set by our directors. What is more "real world" than safely executing a multi-resupply, three-week wilderness trip for a dozen 16-year-olds? I haven't met a successful alum who regrets their choice to spend one more summer here. If anything, they point to camp as a major contributor to their professional achievements.

KWE's success is a reflection of those who work here. It is our counselors who influence the leaders of the future.

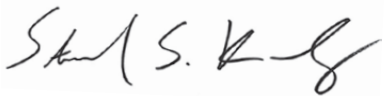
So, I ask: How do we support

the success of those who enable ours? How do we lift up our talent and help them feel confident in the decision to hone their professional skills at these incredible camps? We rally around them with our greatest asset: our community.

**We're building a network of folks who know a KWE resume is worthy of pulling to the top of the stack. Please join me in helping our staff and alumni put their KWE experience to work in careers about which they are passionate. If you're in a position to offer career help in any field, please reach out to my email ([ssk@kwe.org](mailto:ssk@kwe.org)) or my LinkedIn.**

We know our programs enable our future, and both will grow even stronger when we not only attract but also retain an exceptional and diverse cohort of leaders, much like those counselors so many of us emulated when we were campers. I'm excited to work with you so our children keep learning from the best role models out there, including a few more who feel empowered to return to Kieve and Wavus for one more unforgettable summer.

Gratefully,



Sam Kennedy  
Executive Director



# COMMUNITY AND BELONGING AT KIEVE WAVUS EDUCATION

**O**ur mission is at the heart of everything we do at Kieve Wavus Education. It guides us as we continue to expand our community and strive to foster a sense of belonging for each of our campers, counselors, educators, staff members, alumni, and families.

Our programs are known for helping people and communities grow more confident, compassionate, and collaborative. These programs will be even more enriching when a wider range

of experiences and perspectives are present. In August 2020 we formed a task force of trustees, employees, summer camp and TLS alumni, camp parents, and external DEIB practitioners to help organize our action steps and hold us accountable to becoming more diverse. We communicated our intentions to all of you, and in 2021, our Board of Directors established the Community & Belonging Committee to ensure the resources to achieve them.

## Our Mission

Empower people to contribute positively to society by promoting the values of kindness, respect for others, and environmental stewardship through year-round experiential programs, camps for youth and adults, and guidance from inspirational role models.







**Our Community:** While our work toward our goals will never be finished, our century-old experience has equipped us well to lead with kindness, respect for others, and environmental stewardship as we evolve. There's still much more to do, and we want to share some of our progress since last writing to all of you.

We addressed the appropriation of indigenous peoples and cultures at Wavus by creating new cabin names, removing indigenous artifacts, and replacing the 'Totems' with the Rays of Wavus. We incorporated the indigenous histories of the peoples who lived and still live on the land we interact with into our wilderness tripping notes and updated nature curriculum. We grew our relationship with members of the Penobscot Nation to provide an immersive and learning experience at Sugar Island for Kieve and Wavus campers.

All of our staff participate in DEIB training, preparing educators to better teach their students as TLS broadens its socioeconomic range of schools and equipping summer camp counselors to create even more positive cabin environments. We now survey summer camp families to learn more about the diversity within our community, positioning us to better support each camper and informing our work to become more diverse in the future.

We have a new summer camp financial aid process making it

clearer and accessible on our website—simplifying the process for families, no matter how they learn about our camps.

And this fall we launched 'Our Community' at [kwe.org/community](https://kwe.org/community). Following encouragement from DEIB practitioners—Simón Ponce, Andrew Bevan, Apryl Doyle, Masi Ngidi-Brown, and Eduardo Pazos Palma—it shares our EASEL (Experiential Approach to Social-Emotional Learning) curriculum so that our broader community has access to activities that help foster belonging among people in any setting, of any age, and from any background. 'Our Community' is also a space for us to learn from each of you, inviting you to share your KWE story by emailing [belonging@kwe.org](mailto:belonging@kwe.org). We will listen, learn, and be more responsive to what our community needs from us.

**Our Future:** Since our DEIB task force first met in the summer of 2020, we have asked ourselves important guiding questions:

What is diversity at KWE? Who are we now and how can we reflect more forms of diversity? How do people learn about KWE? How do we become more expansive in who we serve? How accessible are KWE programs? How do we lower social and economic barriers that act as gatekeepers? How do individuals feel during their KWE experience? Do our traditions, systems, and curricula foster a sense of belonging for all those in our community and

all those we hope to reach? How do people grow within KWE? How do we provide opportunities for growth for all our role models? How does KWE provide the best experience to all the campers and students under our care?

Fostering a community where everyone feels belonging is imperfect and perpetual work. These questions and their answers will always evolve, and they orient our efforts and empower us all to more effectively advance our mission, spreading values of kindness, respect for others, and environmental stewardship wherever we live and work. ■

## Financial Aid at Kieve & Wavus

Kieve and Wavus extend need-based financial aid ranging from a portion of tuition to the complete cost of camp, including travel and essential equipment.

Scan the codes to learn more:

Kieve



Wavus





# FORGET-ME-NOT: THE WAVUS 100

**A** celebration 100 years in the making! This August we gathered nearly 200 alums on Wavus Point to commemorate the century since Wavus's founding. Welcoming generations of campers back to the lake—from those who built the tremendous foundation on which this camp has grown to more recent campers and counselors whose creativity and compassion made this year so special—was the perfect reminder that the Wavus experience truly does last a lifetime.

The weekend kicked off Friday evening with a welcome barbecue, where the rain broke just in time for our Opening Embers campfire. Everyone was feeling sentimental as The Rays of Wavus were shared among Wavus alums and the Symbols of Damariscotta were recited by Bruce Johnstone (1946-57, Gold Medal 1956). Under a spectacular starry sky, we lit our candles and proceeded under the tall pines up to the Drumlin for final reflections and goodnights.

Saturday morning brought sunshine, a hearty Wavus breakfast, and a Canoe Sprint. Many teams competed, including a team in the war canoe, but Molly "Mo Tuck" Tucker (2009-14), Sarah "Swils" Wilson (2007-14), and Abby Heher (2008-14) were victorious.

Then off to a ceremonial groundbreaking at Andrews Hall. Howard Whitcomb (1948-54, Gold Medal 1954) shared a history of the Andrews family before remarks

from Director Sam Kaplan, Executive Director Emeritus Henry Kennedy, and Wavus Director Kate Kaplan. Grateful for the Andrews family and all those who played a role in Wavus's success, Henry, Kate, Executive Director Sam Kennedy, and Wavus Registrar Joy Bengtson Giffen broke ground to celebrate the 100 years ahead of us and exciting new projects on the horizon for the Wavus campus.

Wavus songs old and new were belted out at lunch on the Sunscape before a gorgeous afternoon that included camp activities ranging from a historical walking tour of campus led by Pris Watson (1951-54) and General Swim.

The weekend culminated with a beautiful and boisterous Saturday evening. Following Chapel in the Pines, where Wavus alums and friends shared reflections, poems, and songs, everyone feasted and danced the night away under a tent on the flagpole field decorated with a nod to our beloved Forget-Me-Not flower.

Whether you joined us in person or celebrated from afar, we all felt the Wavus spirit burning bright on Damariscotta Lake in late August. The bonds forged here cannot be broken. Cheers to the next 100 years!

Special thanks to Joy, the Wavus 100 Planning Committee, and Sarah Kaplan (Wavus 2006-11, KW West 2012, Wavus Council 2014-18) for her design of the Wavus Centennial logo. ■















# JAMES BURK HONORED WITH WAVUS PADDLE

**T**his year we honor James Burk, a member of our maintenance staff, for an amazing ten years of service to KWE. Though James's impact is felt daily on both of our campuses, he has been a particularly integral part of our Wavus summer camp family for a decade—earning him his very own Wavus paddle, which was ceremoniously gifted to him at Closing Embers this summer.

James fixes, James repairs,

James creates, and James builds. From our Ellie Mae ball shed to our beautiful buddy boards and the verdant landscape that we enjoy every day, truly everything you see at Wavus has been made or healed by James's hands.

James, we hardly have words to hold the appreciation we have for the work you do to make sure Wavus is safe and beautiful. We love you, and we thank you! ■



## THE INAUGURAL KW-E SWIM

**T**his summer, for the first time ever, a camper swam the nearly four miles from Wavus to Kieve. Flagged by cheers on both ends of the journey and hyped by friends in a kayak along the way, Elia "E" Southern reminds us just how far the Kieve spirit will take you. In his honor, the route will now be forever known as the KW-E Swim. ■

I wanted to leave my mark on Kieve because I love this place so much."  
—E Southern



# FROM THE ARCHIVES: TRIPS TO CANADA WITH CAMP KAPITACHOUANE

BY HENRY KENNEDY

**T**he legendary Kieve wilderness tripping program has always been central to the camp experience, but it did not always culminate with Maine Trails. For 21 summers total—first in 1948 led by Rod Beebe Jr. (Kieve Council 1942, 1944-48) and Dick Kennedy, then from 1960 through 1978 (with the exception of 1967), and finally in 1987—it would culminate deep in the Canadian woods, where Kievers canoed rivers and lakes in partnership with Camp Kapitachouane. Kapitachouane was founded in 1948 by two Kieve counselors Rod Beebe Jr. and Carl Williams.

This past summer marked the 50th anniversary of my own trip to Canada in 1972. In celebration, a few of my old mates returned to Kieve with their wives to reminisce. Luckily, Chris Bensley, whose dad, Diz, was a founding Kieve trustee, kept a journal of our trip; the highlights of which reminded us that the adventure truly was a rite of passage.

## Highlights from Kieve's 1972 Trip to Canada:

- 14 campers, mostly 14 years old and having just completed the three week Katahdin/Allagash trip, loaded into the back of the Kieve pickup truck. Bob Bishop, a former camp director, drove us up

to Quebec City where, after some antics in the city, we boarded a train headed northwest (without any counselors!).

- 15 hours later, a Kapitachouane counselor signaled for the train to stop, seemingly in the middle of nowhere, hundreds of miles north of Ottawa. We grabbed our duffel bags, hustled off the train, and walked approximately two miles down a dirt road to the base camp.
- Canoes were made of wood and canvas and weighed a lot more than we did (about 130 pounds—nearly twice what our modern-day canoes weigh). On day one we fitted them each with tump straps since each sternman would be carrying them solo on the many portages to come.
- Wanigans were heavy hardwood topped with a canvas tarp that would also serve as our tent floor. They too were tumped to prepare for the bowman portages.
- Tents were heavy canvas, military style. We cut saplings for poles each day. Luckily the canvas retained some of our body heat; sleeping bags and clothing weren't great back in the day and temperatures often dropped below freezing at night.
- Our meals were basically two different varieties: breakfast of

oatmeal and prunes or cream of wheat and raisins, hot cocoa, and some occasional bacon and apples. Lunch was beans, spam, and bannock (bread we baked in a reflector oven in front of the campfire each night for the next day) topped with peanut butter, jelly, or caramel. Dinner was macaroni with either cheese or canned tuna, beans and rice, bannock, and sometimes a pie made with dried apricots. Luckily our crew included several avid fishermen, so we ate a lot of fresh pike as well. Plus it was berry season, so we gorged on blueberries and raspberries whenever we found them.

- For nearly three weeks we paddled downstream on the Kapitachouane River and lakes and then back upstream on the Camachigama River and lakes. We saw countless bald eagles (a rarity back in the old DDT days), came within 15 feet of huge moose (supposedly some Camp Kap counselors had ridden on their backs), enjoyed glorious scenery, portaged and canoed hundreds of miles, jackknifed and repaired a canoe, often tested our metal, grew stronger in every way, and made lifelong friends.

None of us will ever forget hopping out of the back of the truck upon returning to the top of the Kieve hill at dusk on August 16, 1972. The flag had just come down, and we heard the whole camp singing the Kieve song on the other side of Innisfree. They all came running over to greet us conquering heroes. While now a camper's tripping career ends at 15 or 16 years of age, that feeling is a milestone in any campers tripping career across generations—whether at Kieve or Wavus; you've earned the confidence and knowledge that you can accomplish anything you set your minds to. ■



## 1972 KAPITACHOUANE TRIP: PAST AND PRESENT



**Front row (L-R):** Len Murray, Evans Hartman, Ken Tanch, John Seamans **Middle row (L-R):** Ralph Yardley, Steve Vastine, Will Rutan, Stewart Ames, Davis Mead, Chris Bensley, Pete Buck, Henry Kennedy, Chip Brown **Back row (L-R):** Doug Williams, Tom Addicks, Walter Tisdale (all counselors)



**50th anniversary of 1972 (L-R):** Will Rutan, Stewart Ames, Chris Bensley, Henry Kennedy

## KAPITACHOUANE OVER THE YEARS



**Front row (L-R):** Bob King, Dick Frankel, Ames Luce, Ricky Koester, Duncan Cocroft, Ken Moller **Middle row (L-R):** Rich Yellott, Alex Yearley, Frank Shanbacker, unidentified **Back row (L-R):** Joe D'Antonio, unidentified, unidentified



**Front row (L-R):** Mark Hagar, Greg Heher, Tad Davies, John Brett-Smith, Ricky Nelson, John Richards, Peter Davidson, Richard Schaedle, George Lake, Joe Bent **Back row (L-R):** Chris Wolferth, David Peters, Cullom Walker, Sam Thayer, Wade York, Steve Hornblow, Doug Burden, Tim Thomas



**Front row (L-R):** Tom Wilcox, Mark Guthrie, Greg Hunter, George Woodruff, Joey Giles, Chris Lickdyke **Back row (L-R):** Alex Russell, Ed Gardiner, James Mitchell, Court Ebling, Tim Shenton, Ed Stebbins, John Schnieder, William Meade, Roberto Celis



**Front row (L-R):** William Kline, Eliot Heher, Ed Davis, Bill Heisey, Martin Murphy **Back row (L-R):** Jamie Gamble, Chris Hinckley, Vin Samolis, John York, Andy Card, Rob Stier



# KIEVE 2022 ANNUAL DEDICATION— ANNIE RICHARDSON

**W**hen you work at Kieve, you need to wear a lot of hats. Since 1987, few have worn more than Annie Richardson. And as the camp storekeeper and buyer, she has a knack for choosing great hats to make us all look good!

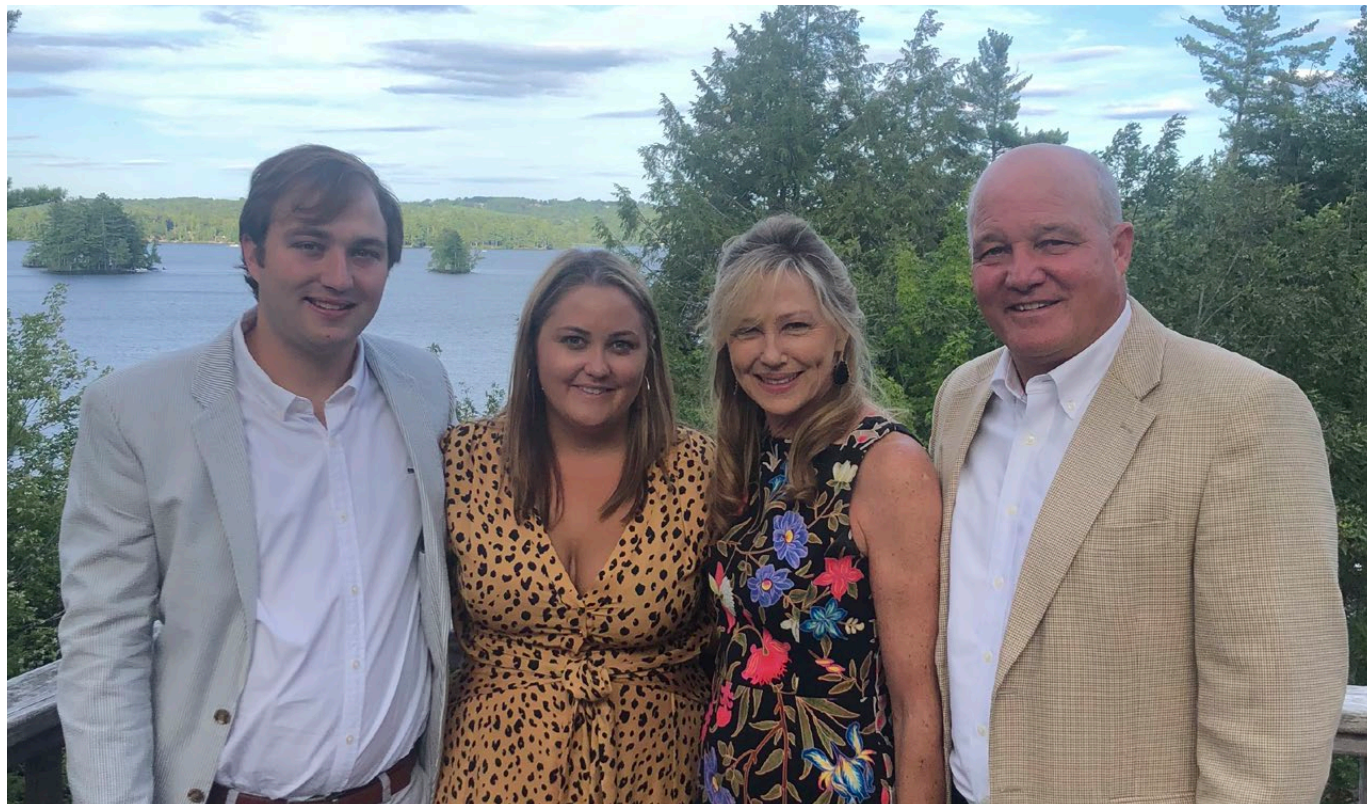
Over her past 35 years at Kieve, Annie has been a nurse, camp mom, pilates instructor, host, cook, gardener, and interior designer. Annie is beloved by everyone at Kieve Wavus Education and throughout the local Lincoln County community for her generous spirit. Keeping family first, Annie is a loving mom to

Laurie Beth and CJ, and she's been Charlie's better half—his queen!—since way back when in Hull.

When you come to Kieve, Annie greets you with a big hug and a contagious smile. When you need a friend, she'll take you on a walk down West Neck Road. When you need to get in shape or recover from an injury, she'll whoop your butt in Annie's Gym. She does it all with grace, patience, and steadfast kindness. She is a part of the soul of Kieve.

We love you, Annie! Thank you for keeping Kieve happy, healthy, and beautiful for countless campers. ■

When you come to Kieve, Annie greets you with a big hug and a contagious smile. When you need a friend, she'll take you on a walk down West Neck Road.







“If God is anywhere, it’s at Wavus, not in some building.”

—Anne Chisholm Sandt

# WAVUS 2022 ANNUAL DEDICATION— ANNE CHISHOLM SANDT

NOVEMBER 20, 1961 – DECEMBER 29, 2021

**O**ur Wavus 2022 Annual is dedicated to Anne Chisholm Sandt. To Anne, Wavus “was everything.” She spent 10 summers as a Wavus camper, following in the footsteps of her mother, Virginia, who was a Wavus assistant director. Anne was also a member of our advisory board from 2005–08.

Anne carried the spirit of Wavus from her mother, Virginia, and passed it down to her own daughters, Ellie and Anna. Ellie and Anna grew up as Wavus campers and later became counselors. Anne was a talented artist, and we look forward to honoring her and her generosity

in our future Wavus arts center.

As she reflected on her time at Wavus and one of her favorite traditions, Sunday Chapel, Anne said “if God is anywhere, it’s at Wavus, not in some building.” Her love and loyalty are knitted into the fabric of Wavus, and her spirit will certainly live here on Wavus Point forever. ■





# MEET DIRECTOR OF THE LEADERSHIP SCHOOL HANNAH LOVEJOY

**In** 2020 The Leadership School hired a new director, Hannah Lovejoy. Hannah is the nexus point between our educators and students and teachers from participating schools, ensuring the greatest impact and reach of TLS's experiential approach to social-emotional learning (EASEL) curriculum. We sat down with Hannah to learn more about her background and the difference that TLS is making.

## Q. Tell us about yourself.

A. I grew up in the northwest corner of Connecticut in a small town called Falls Village. I was raised on a farm with sheep, chickens, and a carousel of cats

and dogs alongside my younger sister, Molly. I've since lived in Virginia, Seattle, and Portland, but I've finally settled down in Woolwich with my husband Dave and our five-month old daughter Louisa.

## Q. What brought you to Kieve Wavus Education?

A. When I heard about KWE from friends at St. Lawrence (where I went to undergrad), it immediately felt like the right fit. I was a TLS educator from 2012-15, and I also started with the Wavus Wilderness Tripping department in 2014. I had a stint outside of KWE teaching and

directing auxiliary programs in independent schools in Virginia and Seattle, but I returned to KWE in 2020 as The Leadership School director and could not be happier!

## Q. What sets The Leadership School apart from other educational programs for students?

A. Access to opportunities where students can foster social-emotional, team-building, communication, and problem-solving skills alongside their peers has always been an important component of young adult development, but this sort of work has never been more important or more beneficial for our students than in the post-COVID era.

Our educators truly care about leaving positive, lasting impacts on each and every student that comes onto our beautiful campuses or in the classroom. They lead activities that challenge students with thought-provoking and fun lessons that encourage the students to learn about things they share in common with one another. You can see how differently the students seem to carry themselves when leaving campus compared to arriving. Their newfound confidence makes me so proud to work here.

## Q. What sets The Leadership School apart for the educators?

A. This past spring, our first cohort of educators began an iteration of a teaching certification program earned through working at TLS. We reimburse requisite coursework, meaning our educators are compensated to become teachers. And they



deserve it. They work so hard, are committed to the kids, and genuinely care about bettering themselves to serve Maine students.

**Q. What does The Leadership School's local footprint look like?**

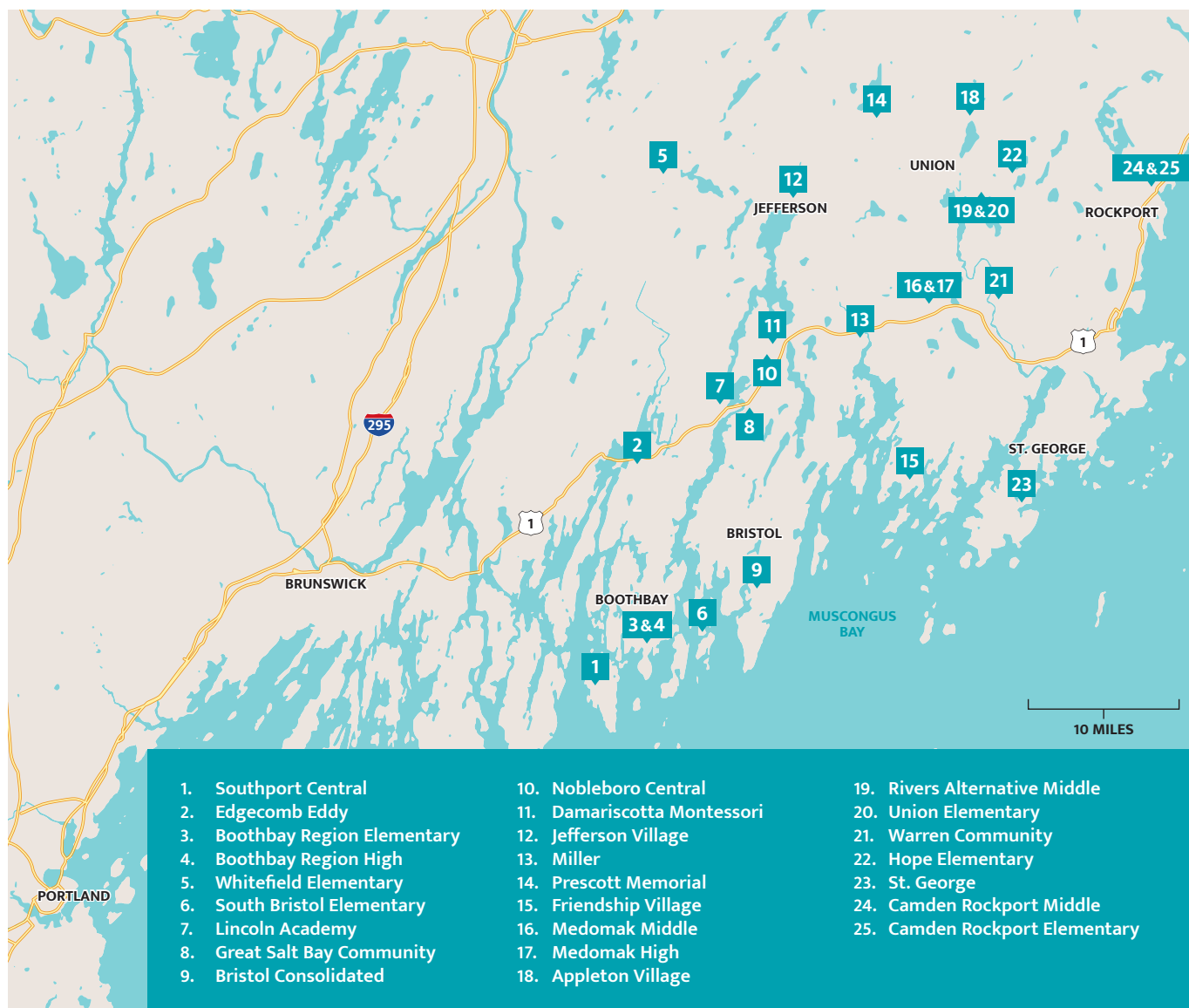
**A.** Our Maine community is so important to us, and we're always aiming to expand our impact locally. We've extended our educator-in-residence

program, sending more of our talented educators to local schools annually for twenty weeks as opposed to the former 10-week stint. And we're welcoming more schools from all over the state than ever to campus, providing more experiences for students from a larger range of socioeconomic backgrounds. It's the best when local kids come to Kieve or Wavus after learning about opportunities here through our TLS programs and educators. ■



## 2022–23 EDUCATOR-IN-RESIDENCE SCHOOLS

FALL 2022 LOCATIONS AS OF OCTOBER 15





# COMING TOGETHER FOR OUR LAKE

**O**n August 23 Midcoast Conservancy hosted the inaugural State of Damariscotta Lake at Wavus's Jewell Lodge with an open invitation to the community. Midcoast Conservancy, which protects and restores vital lands and waters in Midcoast Maine, relies heavily on volunteers to execute necessary tasks to ensure its mission, from boat inspections to invasive plant patrolling and water quality sampling. So Damariscotta Lake Watershed Manager Patricia Nease was blown away by the more than 150 people who gathered to learn about ongoing work to control cyanobacteria and invasive aquatic species as well as how to get involved in the important effort to keep Damariscotta Lake as healthy as possible.

With KWE itself situated on Damariscotta Lake—4,300 acres of water encompassing parts of Jefferson, Nobleboro, and Newcastle, Maine—this is an effort we proudly share. To learn more about how you can join us, contact Henry Kennedy at [hrrk@kwe.org](mailto:hrrk@kwe.org). ■







## Fall 2022 Event Highlights

Whether full of campers or community members, our campuses are always buzzing no matter the time of year. Starting the very day after summer camp comes to a close, KWE begins welcoming a diverse set of mission-aligned programs for first-generation college students to veterans, families fighting cancer, LGBTQ+ youth, and more.

# LOVE YOUR BRAIN FINDS A SPACE FOR COMPASSIONATE CARE AT WAVUS

**I**nitially inspired by the healing journey of professional snowboarder Kevin Pearce following his traumatic brain injury while training for the Winter Olympics, Love Your Brain is a non-profit organization that improves the quality of life of people affected by traumatic brain injury through programs that build community and foster resilience.

Since former Kieve Counselor Adam Pearce reconnected with Charlie Richardson about Love Your Brain's mission in 2018, Wavus has hosted nine five-day programs and counting where people with traumatic brain injuries and caregivers experience the

science-backed, healing benefits of mindfulness, movement, nutrition, art, and community.

Traumatic brain injury is often invisible, leaving people misunderstood and without compassionate care. Most recently this September, Love Your Brain created a space of vulnerability, trust, and belonging at Wavus to explore what it means to love your brain and discover new perspectives through activities that blend curiosity, playfulness, and meaning to unlock possibility.

The experience Love Your Brain offers at Wavus is often life changing. Visit [loveyourbrain.com](https://loveyourbrain.com) to learn more. ■

Here are just some of the organizations we partnered with on campus in fall 2022:

### ACADEMICS

- DaPonte String Quartet Youth Program
- Forman Ingenuity Gap Year
- USM, Bowdoin, and Colby first-generation student programs

### COMMUNITY

- Leadership Maine
- OUT Maine
- Alternative Sentencing Program

### HEALTH

- Dempsey Center
- For Pete's Sake
- Maine Recovery Fund

### VETERANS

- Family Veterans Camp
- Veterans No Boundaries
- New England Paralyzed Veterans of America



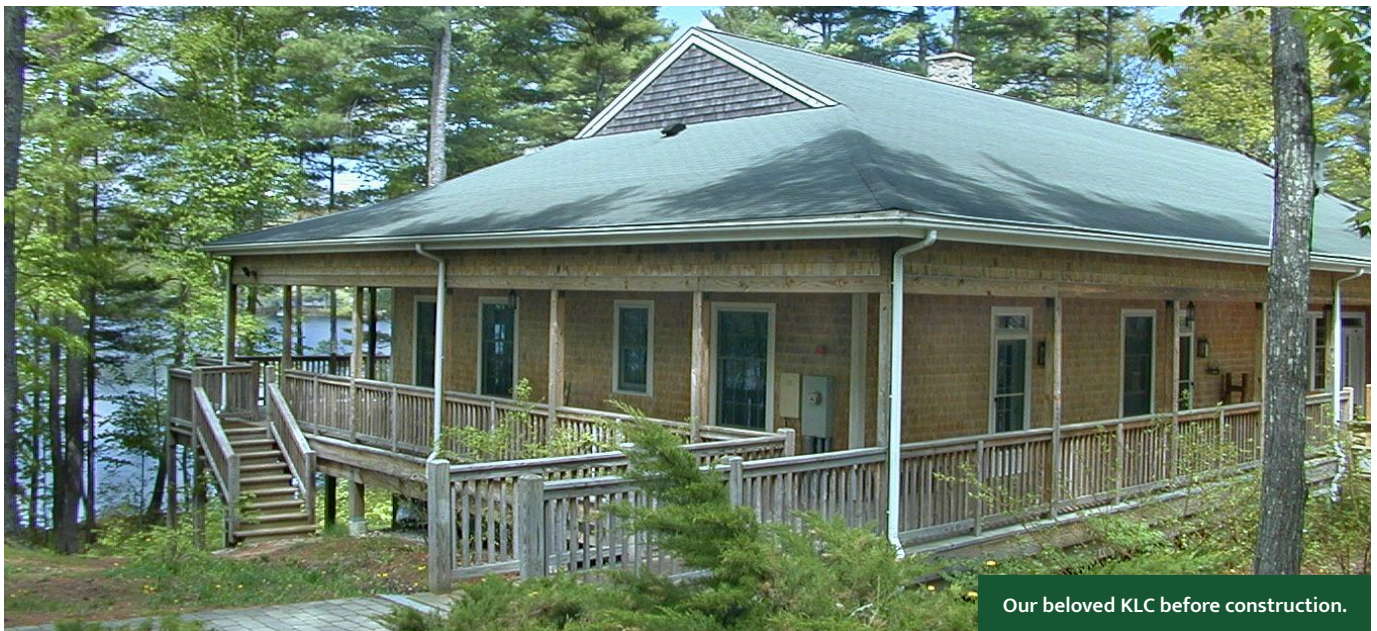
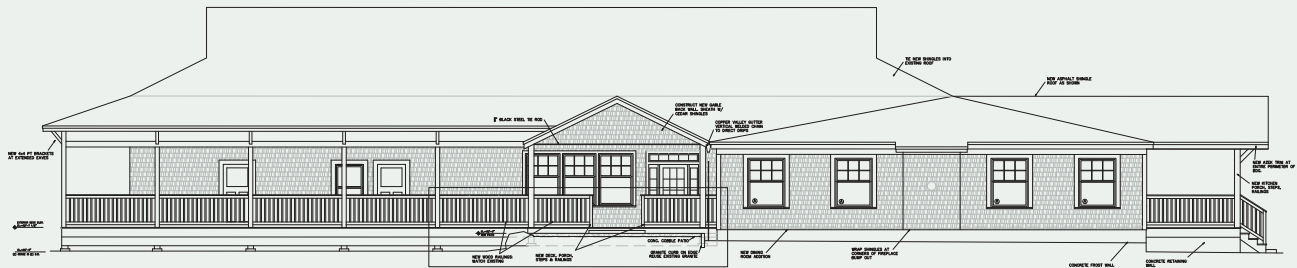
# KENNEDY LEARNING CENTER 2.0

**O**n January 21 (the very day that Marty Kennedy was born!), two big pipes burst at the KLC, taking it offline ever since. An integral part of our programs and a beloved KWE destination, plans to restore and improve the KLC immediately began to take shape. With construction already underway, KLC will once again welcome visitors by early 2024. It will feature a beautiful new dining room large enough to fit all

participants; an overhauled food services space; an expanded porch facing the lake for outdoor gatherings; upgrades to all rooms—expanding overall capacity and introducing three family-style suites, in addition to four queen bedrooms in the Annex; and, of course, an outdoor shower with a view of the lake! We look forward to hosting more guests, retreats, and events in this signature KWE space once again. ■



Working floor plans of the updated KLC.



Our beloved KLC before construction.





# KWE'S EASEL CURRICULUM NOW ACCESSIBLE TO EDUCATORS NATIONWIDE

**I**nspired by Charlie Richardson's *Kindness and Respect; an Experiential Approach to Social-Emotional Learning* and after two years of collaboration with Carnegie Learning, a national leader in education solutions and services for the 60 largest school districts in the country, KWE's EASEL curriculum is now accessible nationwide. This two-part online

course reviews social-emotional learning theory and empowers educators to integrate our experiential approach to education into a traditional school community.

If your school is interested in this professional development tool, they can contact [help@carenegelearning.com](mailto:help@carenegelearning.com) or 1-888-851-7094. ■





## Thanks to the generosity of our community,

Kieve Wavus Education provides need-based financial aid so more campers can experience summer on Damariscotta Lake.

Make your tax-deductible gift  
by December 31, 2022 at [kwe.org/give](https://kwe.org/give).





# Paddle and Thistle Society

We're grateful to our Paddle and Thistle Society friends for making arrangements to leave a planned gift, ensuring that our mission will continue to make an impact beyond our lifetimes.

Dave ☺ & Louise Abbot	Dick ☺ & Nancy Kennedy
Franny & Franny Abbott	Jeremy & Diana LaCasse
Anonymous (3)	Mary Lansing
Evan & Mallory Atherton	Bain Lee ☺
Tom & Ella Auchincloss	Ernie Marriner ☺
Marjorie Wing Berry	Doug & Hanne Maxwell
Bob & Sally Bishop	Matt & Sarah McKenna
Steve & Kathryn Brackett	Carl Meier
William ☺ & Charilly Brown	Collie Moller ☺
Sandy & Sissy Buck	Walter & Kate Morris
Whip ☺ & Sally ☺ Buck	Gardner & Diana Mundy
Bob & Suzanne Burrows	Caroline Newcomb
Frank Carey ☺	Lisa Parker
Noland Chambliss	Ollie & Barb Parker
Clayton Chambliss ☺	John & Meg Peacock
Morgan & Sonia Churchman	Dev & Debbie Phelps
Duncan & Christina Cocroft	Bo & Lynne Preston
Jay ☺ & Misty Cooper	Charlie & Annie Richardson
Charlie & Posy Dana	Ency Richardson ☺
Jon & Mary Davis	Hugh Riddleberger & Louise McIlhenny
Woody & Robin Davis	Mark & Eleanor ☺ Robinson
Max & Becca Dinning	Cliff ☺ & Susan Russell
Chris & Kolleen Dougherty	Frank Saunders ☺
Candace Dyal	Sheila Shorr
Denny Emory	Carol Stout ☺
Candice Falloon	Muffy Stuart
Hill & Susan Ferguson	Doug & Linda Tawse
David & Carol Ann Fulmer	Rob & Anju Tawse
Larry Gardner ☺	Dixon & Gail Thayer
Matt Gault ☺	Steve Thomas & Evy Blum
Joan Gedney ☺	Tom Townsend ☺
Roger & Betsy Hall	Charlie ☺ & Daphne Townsend
Adam & Erin Haselkorn	Rob Trippe ☺
Morrie & Fenella Heckscher	Ken Van Durand
Daren & Justyna Hudson	Dave & Kathryn Villano
Al ☺ & Jan Ireton	Bill & Margot Walker
Pam & Eric Jensen	Charlie & Tia Whinery
Bill & Pat Jessup	Betty Willey
Jackie Jones & John Gassett	Russ & Diana Williams
Laura & Joel Kaplan	Fred Wood
Ruth Keans ☺	Robert & Liz Wood
Henry & B.J. Kennedy	

The Kieve and Wavus seals denote deceased.

## Trustees

Bill Knowlton <b>PRESIDENT</b>	Trustee
Katie Redmond <b>VICE PRESIDENT</b>	Trustee
Harrison Stuart <b>VICE PRESIDENT</b>	Trustee
Matt McKenna <b>TREASURER</b>	Trustee
John Geismar <b>SECRETARY</b>	Trustee
James Blue	Trustee
Morgan Churchman	Trustee
Lynley Ciorobea	Trustee
Chris Dougherty	Trustee
Pam Jensen	Trustee
Louise McIlhenny	Trustee
Cliff Muller	Trustee
Gabriela Perez Rocchietti	Trustee
Libby Schroeder	Trustee
Mistye Wilson	Trustee
Bob Bower	Emeritus
Sandy Buck	Emeritus
Jeb Burns	Emeritus
Tom Haas	Emeritus
Don Keyser	Emeritus
Ollie Parker	Emeritus
Susan Russell	Emeritus
Dixon Thayer	Emeritus
Mike Westcott	Emeritus

## In Memoriam

.....  
 Marion "Mimi" Adams  
 Ellie Blake  
 Constance Bradley  
 Sol Flaherty  
 Curt Lauber  
 Pam Nichols  
 John Peacock  
 Bill Rice  
 Doris Rice  
 Judy Sickley  
 Paula Stratton  
 Susie Weld

## Making a Planned Gift

A planned gift is one of the most flexible and meaningful ways to support future generations of KWE campers, students, teachers, and community members. Giving through your estate plan or a gift that provides lifetime income can have significant tax benefits while also providing for KWE and your family.

If you'd like to inform us of a planned gift to KWE or learn more about the best way to make your gift, please contact our Advancement and Communications Director Erin Gilligan at [erin@kwe.org](mailto:erin@kwe.org).



# Alumni Updates







9

**1 Maeve Mullen** (Wavus 2013-19; 2021), **Isabel Clare** (Wavus 2013-19, 2021), **Lexie Jacobs** (2013-19; 2021), **Brooke Semler** (2013-19; 2021), **Bronte Levin** (Wavus 2014-19; 2021) and **Alex McVean** (Wavus 2012-19; 2021) reunited to summit Katahdin this summer with their moms.

**2** Named in honor of our beloved Breck Denny, The Breck was home to a new group of campers this summer. Breck's friends—**Sam Hanson** (Kieve 1999-2003, Kieve Staff 2008-10), **Phil Field** (Kieve Staff 2006-09), **Matt Carney** (Kieve 1999-2003, Kieve Staff 2009), and **Pete Flynn** (Kieve 1999-2003, Kieve Staff 2008-09)—came to visit and celebrate his legacy.

**3 Harris Proctor** (Kieve 2013-19, 2021) and **Beckham Ytterdahl** (Kieve 2013-19, 2021), cabinmates since Junior Kieve, now go to Colorado College. They ended up in the same dorm (one floor apart!) and have already summited Pikes Peak!



10

**4 Stewart Ames** (Kieve 1969-72; Kieve Council 1974-76) celebrates with his nephew, **Alex Lazarre** (Kieve 2015-19, 2021-22) following Alex's epic summer in Maine Trails.

**5 Paul Keller** (Kieve 1984-87; Kieve Council 1993-95, 1997-98, 2000-05) stumbles upon Innisfree while traveling in India!

**6** 35 years ago, **Chris Dougherty** (Kieve 1980-81; Kieve Council 1986-90; Kieve Wavus Parent 2012-Current; KWE Board of Trustees) was **Chris Block's** (Kieve 1987-93; Kieve Council 1996-99 & 2001; Kieve Parent 2018-Current; Wavus Parent 2019-Current) JC. This summer, **Ellis Dougherty** (Wavus 2012-18; Wavus Council 2021-22) was **Annabelle Block's** (Wavus 2019, 2021-22) JC!

**7** Fellow campers and counselors—**Georgia Dettmann** (Wavus 2009-16; Wavus Council 2018-19, 2022) and **Eliza "Zaz" Pohle** (Wavus 2011-16; Wavus Council 2018-19, 2022)—became Colby College Graduates Class of 2021 together.

**8 Harrison Buck** (Kieve 1994-2000), **Adam Pearce** (Kieve Council 2006), **Henry Kennedy**, and **Mallory Buck** at the Love Your Brain conference at Wavus.

**9 Louisa Jane Lovejoy Berndtson**, daughter of Wavus Assistant Director, TLS Director and Wilderness Tripping Coordinator **Hannah Lovejoy** (TLS Educator 2012-15; Wavus Assistant Director Wilderness Tripping 2014-16; Wavus Tripping Director 2018), and Dave Berndtson (Kieve Council 2015-16; TLS Educator 2014-16; Wavus Assistant Director Wilderness Tripping 2018) was born April 10, 2022 at 21.5 inches and 7 pounds 7 ounces. Cheers to Wavus 2030's newest camper!

**10 Molly Underhill** (Wavus Council 2011) and **Alec Cote** (Kieve 2004-08; KW West 2009; Kieve Council 2011) tied the knot this fall—a celebration Beej and Henry Kennedy wouldn't miss! **Pierce Cote's** (Kieve 2006-12; Kieve Council 2014-15) best man speech featured camp, of course.



Kieve Wavus Education, Inc.

PO Box 169

Nobleboro, ME 04555

207-563-5172

[kwe.org](http://kwe.org)

ADDRESS CORRECTION REQUESTED

NON-PROFIT ORG  
U.S. POSTAGE PAID  
NEWCASTLE, MAINE  
PERMIT NO. 11

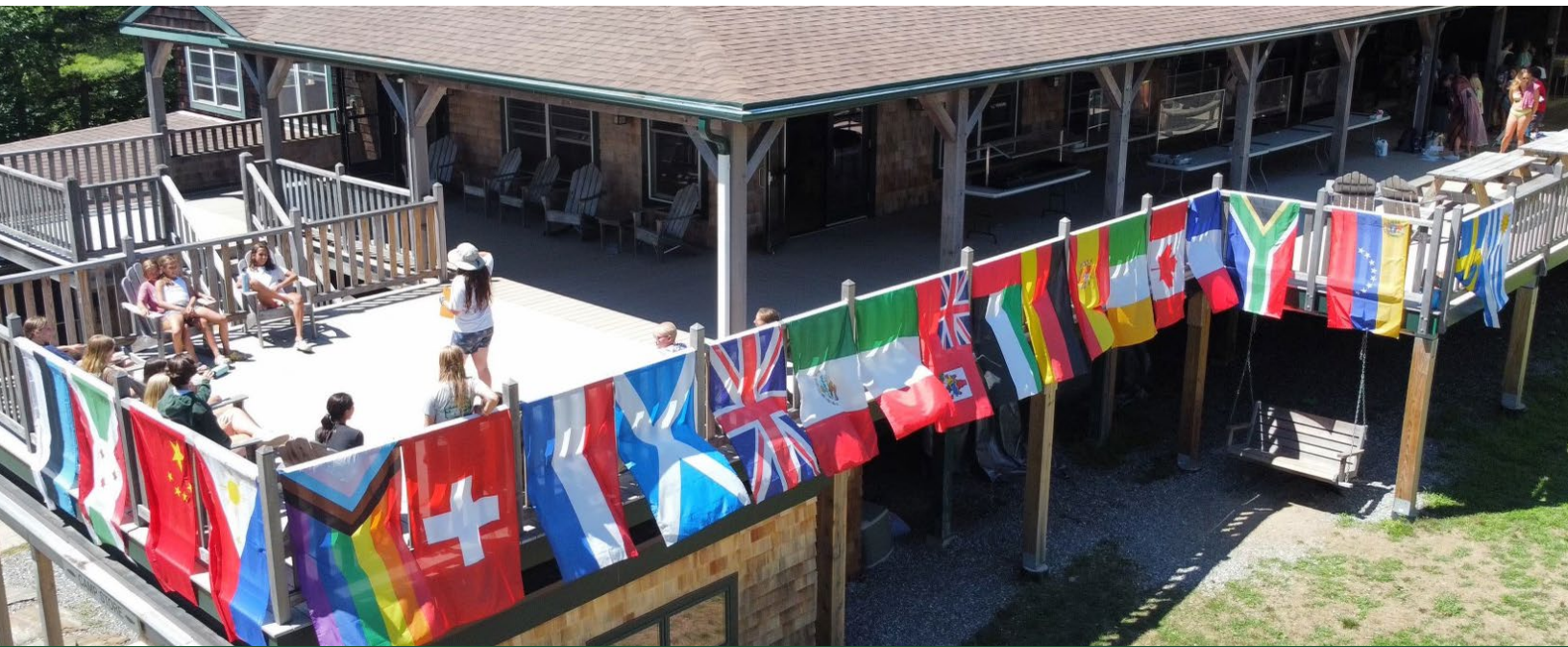


**KIEVE WAVUS**  
EDUCATION



 [kiewwavus](https://www.instagram.com/kiewwavus)

 [kiewwavuseducationinc](https://www.facebook.com/kiewwavuseducationinc)



---

## CAMPERS FROM ALL OVER THE GLOBE CONSIDER KIEVE WAVUS HOME AWAY FROM HOME

---

Dozens of flags adorn the decks of The Jewell and Pasquaney celebrating all the home countries from which campers travel to Damariscotta Lake—their second home!

---