

# KIEVE WAVUS

NEWS • FALL '24

## BOARD OF TRUSTEES UPDATE

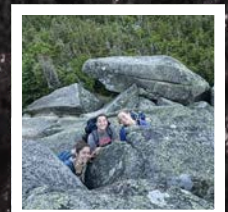
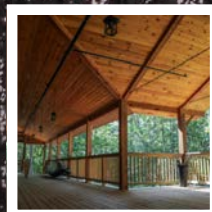
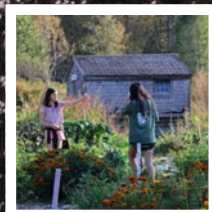
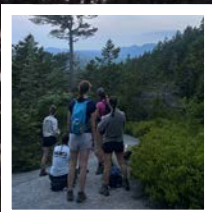
PAGE 2

## HIGHER AND HIGHER WE'RE CLIMBING

BY WAVUS DIRECTOR KATE KAPLAN  
PAGE 4

## TLS BEYOND THE CLASSROOM

PAGE 9



# In This Issue

- 1 Letter from Sam Kennedy
- 2 Board of Trustees Update
- 4 Higher and Higher We're Climbing
- 6 School Partnership Creates New Camper Family Relationships
- 8 TLS 2024-25 Preview
- 9 TLS Beyond the Classroom
- 11 Honoring 10 Years at KWE
- 12 2024 Kieve and Wavus Annual Dedications
- 13 Wavus Maine Trails Returns for Katahdin
- 14 Finding Fascination in Bugs and Trees and Everything in Between  
Learning Through Observation
- 16 From Behind the Lens
- 20 Fall 2024 Events at KWE  
Veterans No Boundaries
- 21 A Renovated and Reopened KLC
- 22 New Faces at KWE
- 23 Paddle & Pines  
In Memoriam  
Board of Trustees
- 26 Alumni Updates
- 28 Future Campers



KWE President & CEO Sam Kennedy at the summit of Katahdin with second session's Maine Trails I this past summer.

# LETTER FROM SAM KENNEDY

**I**n addition to a full-page advertisement from a new local dairy named Round Top, the 1926 Kieve Annual featured the following in an editorial:

*We have been living in a unique environment—an environment of truth. Here we have been honest, honest to others and true to ourselves. There is no place at Kieve for artificiality. We have come down to the fundamentals.*

It's hard to describe Kieve Wavus Education's uniqueness, but those fortunate enough to have lived it understand. This summer highlighted for me the two elements that set this place apart: 1. There is no room for artificiality here. At KWE, we're all safe to be, to find, and to get to know our truest selves. And 2. We learn the most when we ditch our creature comforts and venture into the wilderness.

These summers are a gift, more precious now in a world that bombards our senses and hoards our attention with an endless onslaught of emails, texts, social media posts, and other messages flashing across the screens from which we cannot hide. We need this — KWE's unique environment of truth — to boil away the noise and the clutter and get back to authenticity, honesty, and substance.

Anyone who's witnessed air guitar, a round of announcements after a camp meal, or a raft skit at G-swim can see how this community's embrace of any and every individual — camper, counselor, or director! — willing to offer up their truest self then

empowers that person to take a risk. These risks give no power to artificiality; they are celebrated, shared, and formative.

It is in the wilderness where the most unfettered personal growth happens. Time moves differently when we're set apart from the rest of the world, relying on only ourselves and our cabinmates to overcome the physical challenges of the natural world. We lift one another (and our canoes, wanigans, and packs) up above the miles of muck and mosquitoes of the Mud Pond Portage or the rocks and roots of the 100-Mile Wilderness. We sling tarps from trees and huddle together beneath them out of the driving rain on Chamberlain Lake. We cook quesadillas over campfires in Mt. Blue State Park.

And we love it all. These pleasures we work for resonate longer and more deeply than those always at our fingertips when we return to the instant gratification of the real world.

It's hard to measure, but this summer might have been the busiest — and smoothest — yet for KWE's wilderness tripping department. Lily Tromanhauser, Garrett Phillips, and their excellent teams of tripping directors safely returned 1,172 Kieve and Wavus campers from 153 wilderness trips totalling 1,051 days in the woods. Nearly 100 Maine Trails campers backpacked a combined 17,280 miles on the Appalachian Trail.

In August, I received an email from a New Jersey teacher who hiked the 100-Mile Wilderness this summer (the last portion of the Appalachian Trail) and met

six Wavus and Kieve Maine Trails groups along the way. He wrote:

*It's clear you are building a strong and devoted community to the love of nature.*

*Some of your campers helped me untangle the paracord that was caught on a tree limb when I tried to hang my bear bag. In their free time, some of them helped an MATC trail crew.*

*I have no doubt that your mission is helping them grow into more confident, compassionate, friendly, and grounded individuals. I didn't expect to meet all these kids on the rugged stretch to Katahdin, but I'm glad I did.*

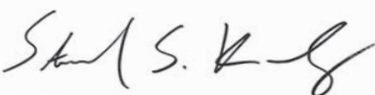
*As a high school English teacher of sophomores and juniors, I will return to school in September and share the goodness I learned.*

The world beyond Damariscotta Lake can be so fraught and complex, especially for kids who spend the other 48 weeks of the year balancing the high-expectations of school and society while dependent on technology where every moment can be subject to judgment.

I'm always amazed by the wisdom our oldest campers share around the closing campfire on the final night of camp. They're transformed in these unique environments in the Maine woods where they disconnect from the grind and connect with their peers and role models; where they grow the most and recognize their truest selves.

Camp is a privilege, and all who enjoy it have a responsibility to export camp's fundamentals back out into the rest of the world.

Gratefully,



Sam Kennedy  
President & Chief Executive Officer

# BOARD OF TRUSTEES

## MEET KATIE REDMOND OUR NEW CHAIR

**A** member of KWE's Board of Trustees for eight years and a Kieve and Wavus parent for about 20 years, Katie's relationship with the organization started when her oldest son Aiden was 8 years old. Since then, all four of her kids — Aiden, Hope, Colin, and Maeve — have joined the KWE family.

Katie's experience and passion for KWE's mission make her an excellent board leader. "I want to be a workhorse for the organization because I love it so much. I'm forever grateful for what it has done for my family. I can't imagine my life or my kids' lives without it."

**Q. As a longtime KWE parent, what has been your most memorable moment?**

A. I love chapel. I love listening to the campers, to the directors. I love the traditions, the songs. You get these little campers up there singing a song or talking about their experience in front of 300 people. I cry every year.

One year a camper got up to share how much he's learned in just three and a half weeks and how it's been the greatest experience. He said into the microphone, "Aiden Redmond, you are my counselor and you changed my life. You were the best thing that ever happened to me." As a parent, that's the greatest thing that anyone could ever say about your child.

**Q. What do you hope to accomplish as you step into this leadership role?**

A. We want more access for families to become a part of the lifelong Kieve Wavus community. More children to be able to experience the abundance of life lessons

camp offers. We are making incredible strides; we gave away more than \$1 million in financial aid this year, more than double the amount that was granted just two years ago. But there's always more work to be done; we must invest and ensure this sort of aid is sustainable in perpetuity.

**Q. KWE has evolved so much in the nearly 100 years since camp began. How do you hope the organization will continue this momentum over the next 100 years?**

A. With Kate Kaplan doing such an incredible job running Wavus, we're eager to see more equity between the facilities and offerings at both camps. It's happening, especially with the new director house going up at Wavus, but additions like an indoor climbing wall and art center at Wavus will be transformative, bringing both camps to the same level. I'm excited to help bring the community together to make this happen.

**Q. What aspect of KWE are you the most passionate about?**

A. The tools my children have learned over the years, starting from Junior Kieve and Junior Wavus to Maine Trails and being counselors. The qualities of resilience, grit, courage, loyalty, empathy, and kindness and respect are all essential tools for life. Camp is my kids' favorite place on Earth, and there's a reason for that. It's also my favorite place on Earth.



Katie Redmond with her husband Aiden and their four children, Aiden, Hope, Colin, and Maeve.

## WELCOMING MASI NGIDI-BROWN OUR NEW TRUSTEE

**M**asi Ngidi-Brown, the interim director of justice, diversity, equity, inclusion for the city of Portland, Maine, joined the KWE board in November 2023. While working as the director of international student and DEI programming at Colby College, Masi sought out expertise for training young leaders away from campus. Enter KWE! And the rest is history. Masi, who has experience with several other nonprofit boards, also currently sits on the board of Global Camps Africa. He lives in Waterville, Maine with his wife Jenny and their children Nachshon and Nandi.

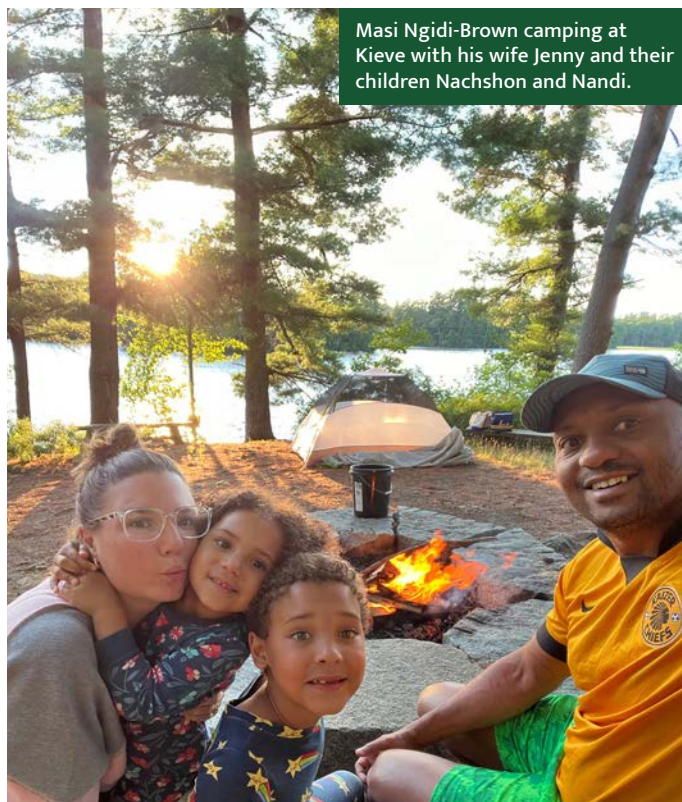
**Q. What was it about KWE that made you want to become involved in such a meaningful way?**

A. The pivot of the organization's DEI focus, and also embracing its power as an educational institution that engages in teacher training with focused support for schools across Maine. I felt there was a lot of thought and intention in this shift, which doesn't happen very often. It involves identifying a different set of priorities and direction but also a change in culture. When an organization evolves, it can be a daunting task. And when it happens well, it's such a beautiful thing.

**Q. This past summer, you and your family spent a night at Kieve while camp was in session. What was that experience like?**

A. Oh, that was fabulous. My goal was to see the camp in action and also expose my son Nachshon to the camp experience. He said, which was a surprise to Jenny and me, "I'm coming back next year. I'm doing this again!" I also got to see the supportive staff and all of their navigating; flexibility like Nachshon being

Masi Ngidi-Brown camping at Kieve with his wife Jenny and their children Nachshon and Nandi.



able to join the group and just go off with them to do something fun. I love that.

It brought back memories of my time attending an all-boy's school, past leadership course experiences, and times I learned to find my own voice as an individual. About how to do that and how to just be confident in things that you do and who you are. We noticed that it seems like every kid is just wearing whatever they want, and it's fully accepted and nobody cares. And the subtle lesson just in that: "Oh in life I can just wear whatever I want. I don't need reinforcement from the external world about what I want to do."

**Q. What do you hope to accomplish while on this board?**

A. Helping develop the strategic plan around engaging different communities across Maine and across the country. Enhancing the current partnerships that the organization has with schools and maximizing them so that we're getting the most out of it on both sides. There are people who know Kieve, people who know Wavus, and they don't know KWE and the work that it has done in the schools or the work it has done in programs across the state. There's a lot of amazing work that happens at KWE, but the folks that interact with it don't always see the full breadth of it. And I'm eager to help with fundraising too; helping bring in more intentional funds. ■

# HIGHER AND HIGHER WE'RE CLIMBING

BY WAVUS CAMP DIRECTOR KATE KAPLAN





**T**he Rays of Wavus have been symbols to aspire to and live by for the generations of Wavus campers and counselors who spend their summer days beneath the pines. These 13 values, recited at every Opening and Closing Embers fire, are ingrained into our Wavus lives, and we do our best to carry them into our lives off of Wavus Point.

Since 2022, we've selected one ray each summer to frame our sessions. This year, the Mountaintop was chosen. "High aspiration is pictured by the mountain top, pointing straight upward. Higher and higher we're climbing, each knowing deep joy in fulfillment."

As a wilderness-tripping camp, it's not hard to connect the imagery and sentiment of the mountaintop to our adventures as individuals and as a group. The importance of challenge, the experience of navigating immovable obstacles, and the triumph of accomplishment are throughlines that are ever-present

in the reflections of our campers and increasingly powerful in the world they are preparing themselves for. And, as I was reminded on my Katahdin hike with two Maine Trails groups this summer, the takeaway is often not about the summit at all but rather the journey itself and what sticks with us long after we've left it.

I hadn't hiked Katahdin since 2016, so I was excited to get out there and hopefully reach the summit. I hiked up with Maine Trails I and down with Maine Trails III. I had expected, naturally, for my focus to be on reaching the summit of this mountain. However, I was focused instead on the incredible leadership of our counselors — Lily, Eliza, Lexi, and Avery, the maturity and confidence of these campers, and the opportunity I had to be completely in awe, even after 14 summers here, of what happens when we send young people into the woods with excellent role models. There were pre-hike affirmations,

ritual handshakes, lots of jokes about the privy, an astounding attentiveness to the needs of others, and a love that outshined the perfect view we had from the summit. There was supportive communication about the pace, reflections on challenging days that came before, and 15- and 16-year-olds shrieking with joy at the sight of the sunrise or a particularly gorgeous vista; no phone or social media necessary.

As a grateful fly on the wall for two groups (though "families" feels more accurate here) coming to the end of such a transformative experience, I did my best to give them space when I could. The final quarter mile of the hike down from Katahdin is relatively flat and wide. The hiking line quieted a bit; the rush of accomplishment and the heaviness of endings was palpable. The group spread across the trail without words and hiked arm in arm as they completed the last steps of their 200-mile journey ... "each knowing deep joy." I have to hope that for the rest of their lives, they'll remember that moment and the gift of finding real confidence in their ability to do hard things at such a young age.

So yes, I made it to the summit of Katahdin. That's now merely a footnote in my larger takeaway about why we do what we do at Kieve and Wavus and why we must work so hard to keep this going — for the kids. ■



# SCHOOL PARTNERSHIP CREATES NEW CAMPER FAMILY RELATIONSHIPS

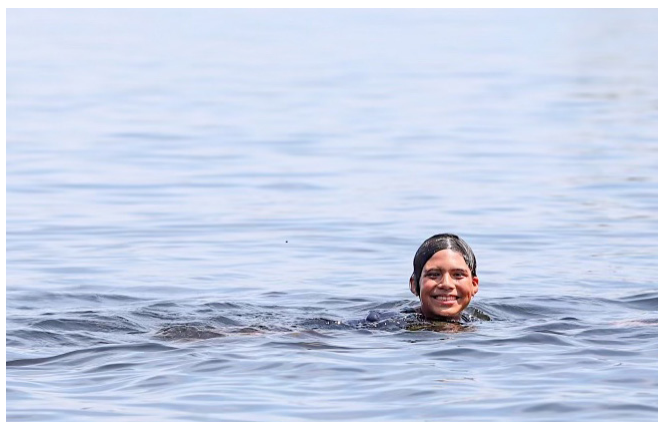


**W**hat started as an idea during a chance meeting on a golf course has grown into a thriving partnership between Kieve Wavus Education and Stamford, Connecticut's Waterside School.

When KWE's Charlie Richardson met Jim Berger, a trustee at Waterside, the pair were taken by each other's impactful stories about each organization. After discovering that Kieve and Wavus parent Lisa Stuart was also on the board at Waterside (now the chair), the deep connection between KWE and the independent day school seemed like fate.

Waterside administrators worked with KWE to connect with students who had little exposure to wilderness tripping and would grow and thrive at a camp with similar values to Waterside. Camp and the wilderness can be new territory for many families, especially from the New York metro area. Whether this would be a child's first adventure in the woods or first time sleeping away from their home, their families felt Waterside's trust and guidance made Kieve and Wavus more familiar and approachable.

In 2023, KWE's Sam Kennedy, Sam Kaplan, and Caddy Brooks visited Waterside to meet with community members, and word about the camps began to spread. That summer, six campers from Waterside attended Wavus and five attended Kieve. In 2024, through the trust built between the two communities and the contagious camp buzz shared among Waterside students and parents, KWE welcomed 19 amazing Waterside campers.



“Between the staff, the faculty, facilities, our son had the best time! He even hiked up Mount Washington. I mean come on! So much excitement and adventure,” said Waterside parent Fiona Angelov, who added that it was so nice to see other Waterside students at pick up and that they are all making plans to return next year.

From in-camp activities including swimming, sailing, and archery, to wilderness trips through the woods and waters of Maine, the students reveled in the best that summer camp offers.

“The experience our students gained was truly invaluable. Not only did they have the chance to explore various enriching activities, but they also developed essential life skills, built new friendships, and created lasting memories,” said Jamel Keels, Director of Advancement & Community Engagement at Waterside, and father of both a Kieve and a Wavus camper.

The Waterside students are an integral part of our KWE family.

“These kids mean so much to the Kieve Wavus community. It’s so fun to welcome new kids and families in the summer and then visit them during the school year to see their growth, hear about their most memorable moments, and learn what stays with them long after they leave,” said KWE President & CEO Sam Kennedy. “We hope to build this partnership so Waterside students thrive at Kieve and Wavus forever.”

**The collaboration between KWE and Waterside exemplifies the type of partnerships between our nonprofit and schools that help support future campers ready to step outside their comfort zones.**

**The trust and insight school leadership offers parents and KWE sets everyone up for success, while the experiences KWE provides bring abundant opportunities and lifelong skills to amazing new campers who would not have found camp otherwise. We are committed to dedicating the resources necessary to foster these mutually beneficial school partnerships long into the future. ■**



# TLS 2024–25 PREVIEW

**S**ince it began in 1981, TLS has grown from a five-week spring session into a 10-month school that cultivates career educators who provide experiential education programs to thousands of Maine kids.

**20** TLS educators

**13** Maine counties

**26** Educator-in-Residence schools

**48** Residential schools

**8** TLS educators enrolled in KWE's teacher certification program

## GET TO KNOW OUR TLS LEADERS



**MEET**  
Garrett Phillips

**TLS Director**

**STAFF YEARS:**  
2014–present

**EMAIL:**  
garrett@kwe.org

Garrett, who holds a bachelor's degree in geology from St. Lawrence University, first joined KWE as a camp counselor in 2014. He discovered the true power of education during his first year as a TLS fellow in 2018 and has been passionate about outdoor education ever since. Garrett helps run the day-to-day of every TLS program, working closely with visiting staff and students, school administrators, and our fellows, furthering their abilities to give back to the schools and communities they serve.



**MEET**  
Hannah Lovejoy

**TLS Associate Director**

**STAFF YEARS:**  
2012–18, 2020–present

**EMAIL:**  
hannah@kwe.org

Hannah became a TLS educator after earning bachelor's degrees in Spanish and psychology from St. Lawrence University. Her time as a TLS educator led to teaching positions in independent schools in both northern Virginia and Seattle, while working in the tripping department at Wavus during the summers. Hannah returned to KWE full time in 2020. In her role at TLS, Hannah creates and fosters relationships with school partners and works closely with school administrators to set everyone up to have a successful TLS experience.



**MEET**  
Kate Vita

**TLS Associate Director**

**STAFF YEARS:**  
2021–present

**EMAIL:**  
katevita@kwe.org

Kate Vita has a bachelor's degree in elementary education and master's degree in transformational curriculum and instruction from Florida Southern College. After earning her degrees, Kate spent time teaching in the Netherlands and conducting research on relationships in the multicultural classroom as a Fulbright scholar. Following her return to the states, she taught second grade and led professional developments that focused on school communities and social-emotional learning. She joined KWE in 2021, where she sets our social-emotional learning curriculum for each TLS program and leads all teaching staff professional development.

---

# TLS BEYOND THE CLASSROOM

---

**E**ach winter, The Leadership School's 20 educators are placed in residence at no cost to 26 local Midcoast schools for 20 weeks, positioning them to make a lasting difference in ways most meaningful to their respective schools. One of the most beautiful things about the match is that the educator's impact goes far beyond the classroom; they become integral members of the school community. Here are just some of the ways our educators use their unique skills and interests to enhance the learning and aspirations of so many deserving students.

**Colors Club Organizers at  
Camden Rockport Middle School**  
► TLS Educators Katie Caffrey & Julia Lancia

"Part of the work we do through TLS is ensuring everyone is treated with kindness and respect. LGBTQ+ teens don't always get the kindness and respect they deserve," said Katie. Encouraging activism and building connections within the LGBTQ+ community at CRMS was the main focus of the Colors Club led by Katie, who served as an EIR at the school this past year, and Julia, who was at the school two years ago and most recently at the district's elementary school. The club, which had about 15 members at its peak, provides a safe place

for students to be themselves while also learning how to talk about social issues and advocate for change in their community. Julia and Katie were able to connect students to other organizations and resources, including OUT Maine, through their KWE connections. "We talk a lot about self-awareness and creating an open environment with open dialogue, and that can help them find themselves and realize change can happen effectively if they know themselves," said Julia, who along with Katie, love seeing students who are more reserved in class open up and be their authentic selves in the club. Julia added that giving students tools, such as developing ways to have productive dialogue and build community, is so important.

Continued on next page ►

## Four Square Coach at Whitefield Elementary School

(now Four Square World Champions!)

► TLS Educator Judy Jutras

When Judy joined the school as an EIR, she learned four square was a hot spot for arguments, fights, and tears among third- through fifth-graders. Following her instinct to help and after a little research, Judy discovered the Four Square World Championships are held every year in Bridgton, Maine. So she told the students she was scouting for a world championship team. “I used my skills from TLS to work on sportsmanship on and off the court. To make the team, students had to show good sportsmanship, good line behavior, and passion,” said Judy, who provided weekly report cards so the players could see what they had to work on. By the end of the school year, there were no longer any fights around four square, attendance was on the rise, and more kids seemed excited to be at school. The team made it to the World Championships in April and had winners in several categories. Athletes placed first, second, and third in the girl’s division; third in the boy’s division; and sixth in the junior men’s division (13–50 years old). Judy’s got big plans for her 2024–25 world championship team!



## The Forest School Organizer at St. George School

► TLS Educator John Probert

The Forest School is an after-school enrichment program offered to second- through fifth-graders that aims to build a strong and cohesive team of outdoor explorers

through structured play, walks on school trails, and team-building challenges. About 30 students participated during the 2023–24 school year, and John looks forward to offering the program again this winter using a lot of the EASEL activities and games from the TLS curriculum. “A highlight is integrating students from different grades and classes. It creates interesting dynamics and opportunities for the older students to step up as role models for the younger kids,” said John.



## Girls Varsity Lacrosse Assistant Coach at Lincoln Academy

► KWE Operations Coordinator Will Bliss

This past spring, Will took on a coaching role for the girls varsity lacrosse team at Lincoln Academy. “Seeing the same group of kids every day for practice and working your way through the journey of a season is a great way to test your skills as an educator,” said Will. “Not to mention the benefits of becoming a little more integrated in the Lincoln County community beyond KWE’s regular programs.” Some of Will’s most memorable moments from last season included practices under the lights, winning 7–6 against a much bigger school with a more established program, and being undefeated at home until the first round of the playoffs. He looks forward to continuing mentorship and team building opportunities when he returns to coach again in the spring. ■





# HONORING 10 YEARS AT KWE

**T**his summer, we honored Hannah Lovejoy and Garrett Phillips for 10 years of amazing leadership at KWE. Reaching this milestone reflects a deep loyalty and commitment to our mission, place, and people.

Hannah received her Wavus paddle and blanket at second session's Closing Embers. Wavus Director Kate Kaplan and a flock of camp leaders shared gratitude for the steadfast leadership and camaraderie she has given us

in the many positions she has held and currently as the Wavus associate director, TLS associate director, and KWE wilderness tripping coordinator.

Sam Kennedy proudly presented a Shaw & Tenney paddle to Garrett at the second session's final campfire. Normally a quieter evening on Kistler Point, on Aug. 9, 350 campers and counselors erupted with adoring cheers and praise for Garrett. Garrett embodies Kieve's

values. He exudes kindness and respect. His love for the kids causes him to work tirelessly to create incredible wilderness experiences each summer as Kieve's wilderness tripping director. He brings the same love, care, and intensity as director of The Leadership School throughout the year.

Hannah and Garrett, we love you both and appreciate all you do for so many people here at KWE and beyond! ■



## WAVUS ANNUAL 2024 DEDICATION

Hannah Lovejoy

**S**ince she arrived at Kieve Wavus Education in 2012, Hannah's leadership and loyalty have positively contributed to the entire organization. For over 10 years, there has not been a time when Hannah hasn't risen to do what needs doing. This steadfast dedication is reflected in her various roles at KWE through the years. Hannah has served as a TLS educator, Wavus counselor, Wavus wilderness tripping director, TLS director, and currently as a TLS associate director, Kieve Wavus wilderness tripping coordinator, and Wavus associate director.

With profound gentleness and consistent confidence, Hannah brings calm to the people and places around her. With an incredible eye for detail, logistics, and risk management, she is sought out for her ability to find solutions that reflect our organization's mission and commitment to the well-being of our campers, students, and employees.

Hannah's leadership at Wavus has been particularly significant over the years. She is ever-present, walking around to activities, guiding our trip directors, counseling our staff, and connecting with campers. With deep love and empathy, she holds high expectations while providing the support to help those around her be their best. ■



## KIEVE ANNUAL 2024 DEDICATION

Dick King

**H**is son, Mac (a Kieve alumnus), wrote of his dad: "Dick was not one for sitting still... He had terrible handwriting... (and) he took to woodworking." Obviously Dick King was a Kieve camper at heart.

Dick loved Maine. He loved camp. His family made lifelong friends on Damariscotta Lake. Two of his three children met their spouses when they were Kieve counselors. After Mac was married at Wavus, Dick stood up to promote the camps to all the guests, encouraging contributions to the Annual Fund. He cared, and Kieve Wavus Education adored him for it. We will miss Dick forever, and we will honor him by emulating his sense of adventure for generations to come. ■



# WAVUS MAINE TRAILS RETURNS FOR KATAHDIN

BY GENNA MARVIN (WAVUS 2016–19; 2021–22)

**T**his past summer, my six friends and I — Tessa, Charlotte, Fiona, Petra, Charlotte, and Kiki — and our counselor from Maine Trails, Caroline, returned to Baxter State Park to hike Katahdin. In 2023, we had completed Maine Trails, but due to many days of rain, we were unable to hike Katahdin. We were devastated by our bad luck and all promised to return the next summer to hike it. A year later, all seven of us arrived in Maine to prepare for the hike. Being reunited after a year apart was so special. As we did every year at Wavus, we immediately picked up with laughter and conversations as if no time had passed.

We had booked a campsite months in advance and all drove up to Baxter State Park together. On the day of the hike, our alarm went off at 3 a.m. and we prepared for the hike and started off on the trail. We hiked under treeline with our headlamps and enjoyed peeking through the trees to see the sun coming up. Though it was one of the hottest days of the year, we enjoyed clear skies and beautiful views as we ascended Katahdin on the Hunt Trail. We were elated to hike in each other's company again and reminisce about our previous adventures. The bouldering section was so much fun, and it felt incredible to get to the summit,



knowing generations of Wavus girls had done it before us.

We are so grateful that Wavus gave us the experiences that it did and that we now have these lifelong friendships. Although our camper years have ended, we are excited to become counselors and continue to cherish the memories, confidence, resiliency, and family the past summers at Wavus have given us. ■

# FINDING FASCINATION IN BUGS, TREES, AND EVERYTHING IN BETWEEN



**J**udy Jutras, KWE's newest environmental stewardship coordinator, is ready to share her sense of wonder with the next generation of environmentalists.

"TLS's whole social-emotional curriculum is about realizing that everybody has feelings and ideas and whatever you do has an impact. But that impacts not only on people, it's also on the environment; that all ties together nicely," said Judy.

The Scarborough, Maine native joined the KWE staff in 2022 as a counselor and graduated from the University of Dayton in 2023 with degrees in international business management and education and allied studies. As a nature instructor at Wavus from 2023–24, she became

a licensed lobsterman for the *Snowgoose III* and a licensed apiarist to help bring an observational beehive to the Kieve garden shed.

In her new role as environmental stewardship coordinator, Judy, who will be taking over for Sam Pierce, will continue to grow existing collaborations with organizations such as the Hidden Valley Nature Center, Midcoast Conservancy, Coastal Rivers Conservation Trust, Maine Farmland Trust, and Scrap Dogs composting, while also forging new partnerships. Judy will expand the environmental stewardship curriculum, keeping it in the forefront of the summer camp experience and making it even more ingrained in TLS.

## LEARNING THROUGH OBSERVATION

While working in the camp gardens as a nature and garden instructor, Environmental Stewardship Coordinator Judy Jutras noticed a lot of campers were afraid of bees. Recognizing fear as a learning opportunity, Judy set out to teach the campers while getting them more comfortable with the frequently misunderstood insect.

Last fall, Judy, now a licensed apiarist in Maine, was awarded a grant through the Whole Kids Foundation to build an observational beehive. Installed this spring in the Kieve garden shed, the beehive and its approximately 15,000 inhabitants have already been a great learning tool for campers and TLS students, while also pollinating the garden.

The exposure is paying off. While on the *Snowgoose III* this summer, Judy was psyched to see the campers' collective new fascination with bees. Instead of being scared, the campers quietly watched bees up close to discover things like how much pollen they collect in a day and if they are male or female. ■





# FROM BEHIND THE LENS

BY CAMP KIEVE DIRECTOR CADDY BROOKS



The boys from Maine Trails I huddle up at 3:45 a.m., poised to take in the sunrise on top of Katahdin.

**A**s generations of campers know, the best way to experience Kieve is to live it.

I first became acquainted with Kieve after becoming fast friends with Sam Kennedy during our first year at Colby College. It wasn't long before I found myself visiting the end of West Neck Road, taken by the beauty of this hidden paradise on Damariscotta Lake. I'd watch campers run from activity to activity, thinking I understood camp's draw. But it wasn't until two years ago, after leaving my athletic

director role at Hebron Academy to become an associate director at Kieve, that I realized I had barely scratched the surface. The scope of what we do and the impact it has on a camper lasts a lifetime. It's an effect that isn't possible to adequately or justly describe.

When words fail me I often lean on my camera, and perhaps the best way of sharing the Kieve magic is from behind my camera lens. And so this summer — as I did last year and hope to do every year as the Camp Kieve director — I set out to do just that.



Asher May assisting counselor Chris Ledyard at the very beginning of the famed Northeast Carry.



Head Bunk Counselor Henry Pohle, along with campers, finish their last stretch of canoeing on the East Branch of the Penobscot River. One more day of white water rafting ahead, and then back to Kieve!

I had an incredible experience sharing a sunrise Katahdin hike with Maine Trails, snapped photos of Long Voyage on the eve of their Moosehead Lake paddle and as they dominated the Northeast Carry and Grindstone Falls, and captured the excitement and nerves as Wavus' Allagash I embarked on their journey at Hannibal's Crossing.

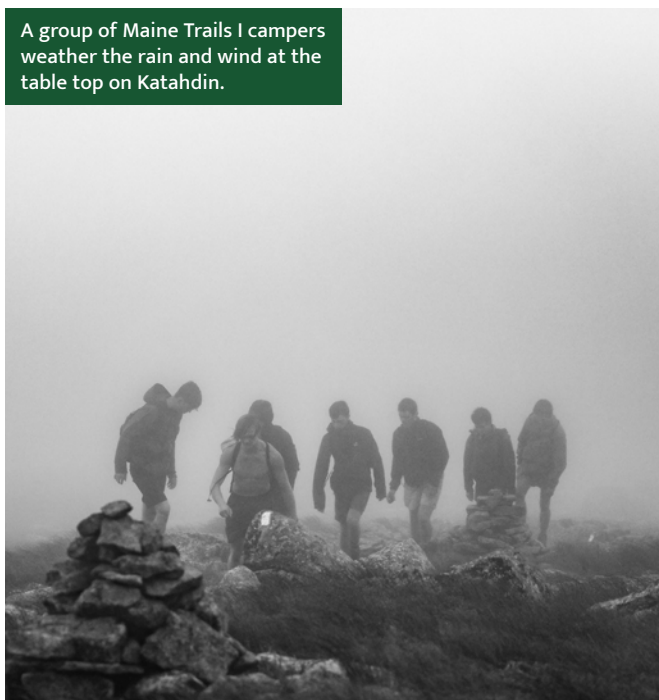
From behind the lens, I am always honored to witness the moment when our campers step out of their comfort zones to discover beauty,

fun, and a bit more about themselves; moments that create future leaders and memories that last a lifetime. The experience shared here can start to be described through stories and pictures, but as I've learned over the last two years, the best way to experience Kieve is to *live* it. I am so grateful to be one of the lucky people who now has the privilege to "get it," and am thrilled for our future campers, both returning and new, to be transformed by this wonderfully indescribable place. ■

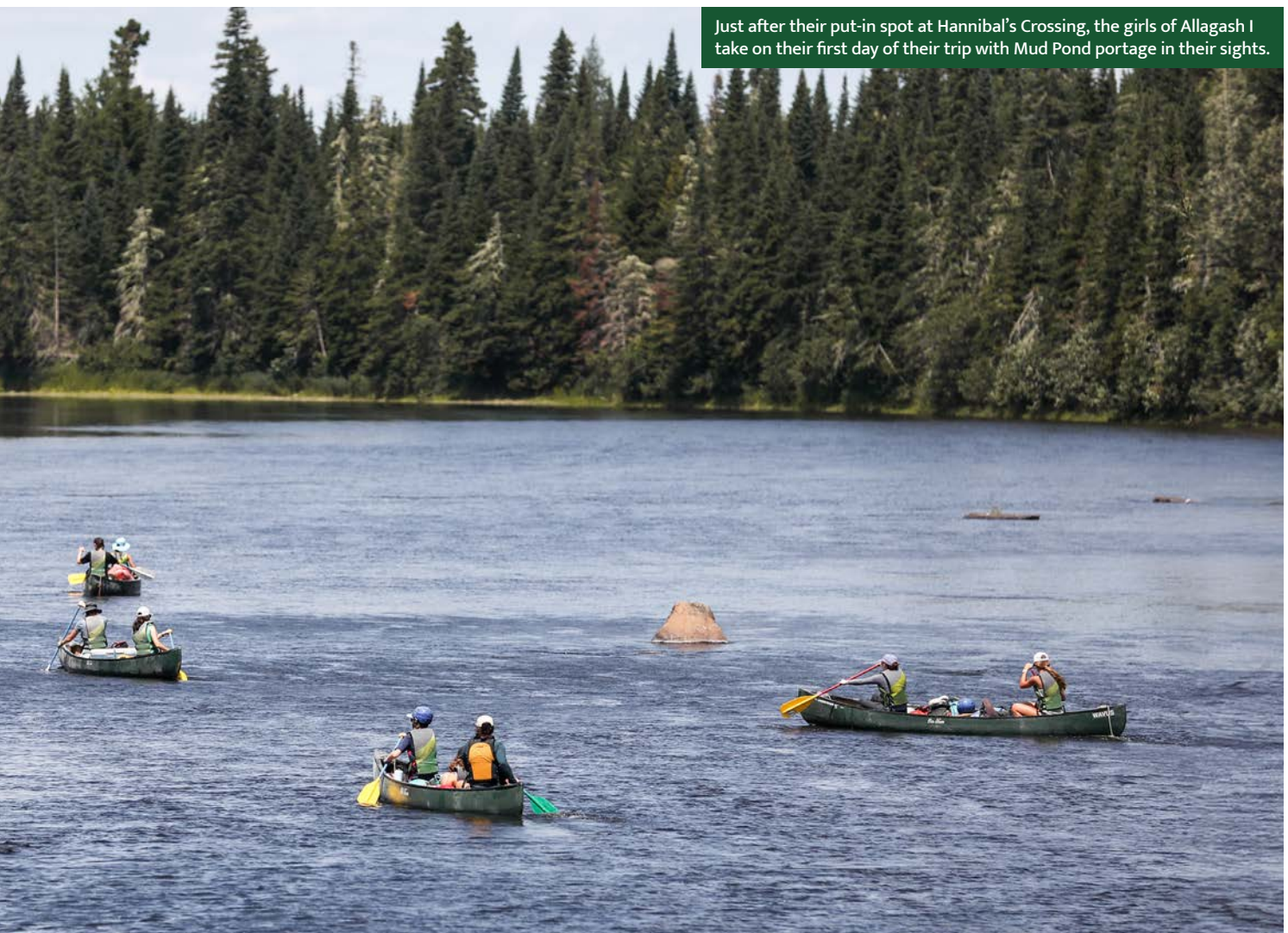
Guided by their counselor Abba Wilson, two Wavus campers portage their canoe to Hannibal's Crossing to start their first day of the Allagash.



A group of Maine Trails I campers weather the rain and wind at the table top on Katahdin.



Long Voyage II campers surround Head Bunk Counselor Henry Pohle, eagerly waiting for food at The Birches campsite.



Just after their put-in spot at Hannibal's Crossing, the girls of Allagash I take on their first day of their trip with Mud Pond portage in their sights.



At 6 a.m., The girls of Allagash I loaded the canoes, hitched the trailer and were ready to depart Wavus for their unforgettable trip!

# FALL 2024 EVENTS AT KWE

**W**hether full of campers or community members, our campuses are always buzzing no matter the time of year. Once summer camp comes to a close, The Leadership School starts and KWE also begins hosting a diverse set of mission-based programs for veterans, families fighting cancer, LGBTQ+ youth, college students, local businesses and more.

Here are just some of the organizations we're hosting on campus in fall 2024:

## YOUTH LEADERSHIP

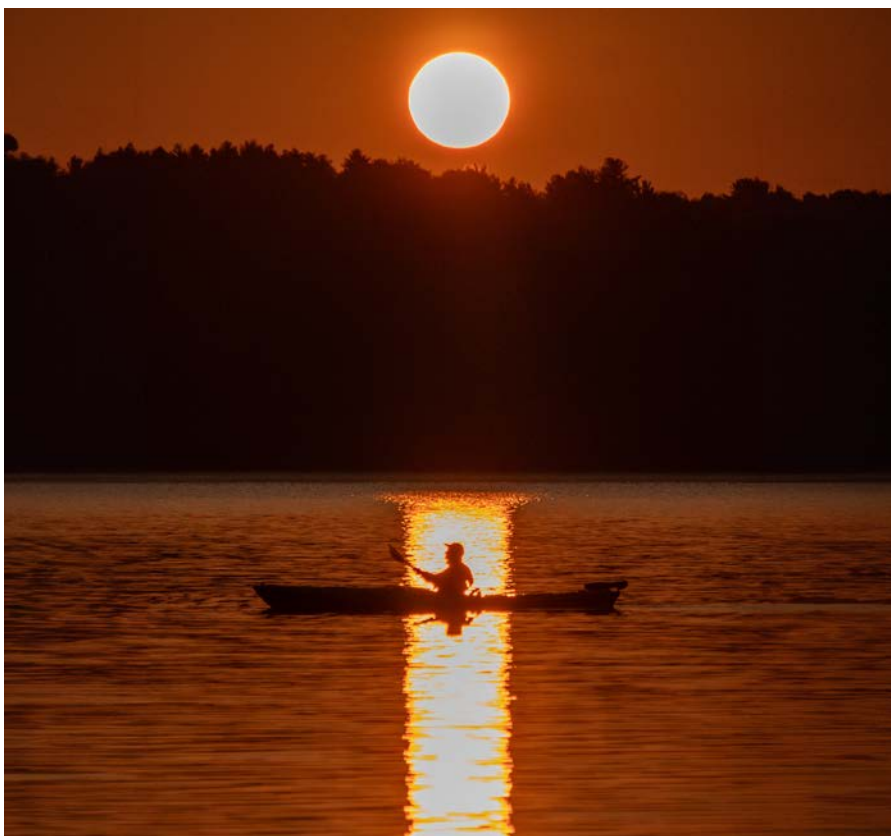
- TREKKERS STUDENT LEADERSHIP
- OUT MAINE LEADERSHIP
- COLBY OUTDOOR ORIENTATION TRIP LEADERS

## HEALTH & WELLNESS

- MOBIUS
- SPACE TO BREATHE
- BOWDOIN WELLNESS RETREAT

## COMMUNITY

- HEALTHY LINCOLN COUNTY
- MAINE GOVERNOR'S OFFICE OF POLICY INNOVATION AND THE FUTURE'S ANTI-HUNGER MEETING
- MIDCOAST CONSERVANCY STATE OF THE LAKE EVENT



# VETERANS NO BOUNDARIES

**S**ince 2006, Wavus has welcomed veterans, active-duty personnel, their families, and volunteers with the nonprofit Maine Adaptive Sports & Recreation (MASR) to host its Veterans No Boundaries program. The mission of MASR is to promote year-round education and training for individuals with disabilities in order to develop skills, enhance independence, and provide enjoyment through active recreation. For a weekend in August, participants with the group take part in exciting and rewarding adaptive recreation opportunities including kayaking, canoeing, fishing, boating, archery, cycling, ropes course, tennis, pickleball, and arts and crafts. This past summer, about 100 people attended, including families and volunteers, for a weekend of camaraderie and relaxation on Damariscotta Lake. ■





# A RENOVATED AND REOPENED KLC

**T**he new and improved Kennedy Learning Center is officially open! After being closed since January 2022 for renovations due to a burst pipe, the rental facility reopened in September to once again be a place where work teams visit to learn and grow, groups spend time to think and create, and families come together to celebrate and share.

Located on the Kieve campus, the KLC was built in 1994 initially as a temporary home for nearly-year-round staff as well as for teachers, educators, and community and business leaders to host retreats and workshops in a comfortable, hospitable, and serene setting.

Today, the KLC continues to offer its guests a private retreat setting on the shores of Damariscotta Lake. Updates include a beautiful new and larger dining room; an overhauled food services space including a walk-

in fridge and freezer; an expanded porch facing the lake for outdoor gatherings; upgrades to all rooms — expanding overall capacity and introducing three family-style suites, in addition to four queen bedrooms in the Annex; and an outdoor shower with a view of the lake!

We host dozens of events across our campuses throughout the year. The KLC and Pasquaney Hall in Nobleboro and Wavus' Jewell Lodge in Jefferson are fantastic lakeside event facilities. In addition, cozy lakeside cottages and B&B-style lodging make the camps popular destinations for board meetings, family reunions, wellness retreats and team building events. Meals, amenities and program facilitation can be adapted to fit each unique group's needs. For more information about the KLC and other offerings, visit [kwe.org/retreats](https://kwe.org/retreats). ■

## COMMUNITY CLIMB NIGHTS



**J**oin us this fall and through the spring for Community Climb Nights! These family-friendly events feature indoor climbing with the guidance and support of our amazing TLS staff.

See you at the Buck building from 6–8 p.m. on the following dates:

- November 15, 2024
- December 13, 2024
- January 17, 2025
- February 21, 2025
- March 21, 2025
- April 11, 2025
- May 9, 2025

Cost per participant is an optional fee of \$5/per person and \$10/per family. All gear provided.

Waivers to be signed upon arrival. For more information, contact Marge Greenleaf at [marge@kwe.org](mailto:marge@kwe.org). Please keep an eye on our Instagram @kiewavus and Facebook @kiewavuseducationinc for changes or cancellations. ■

# MEET THE NEW FACES AT KWE



**ALUMNI ENGAGEMENT  
AND CAMPAIGN COORDINATOR**

**John McDevitt**

"Since that very first summer I spent at the end of West Neck Road, I've known just how special this institution is, and I've always thought about finding my way back to KWE in a year-round role. Engaging with KWE alumni and supporting advancement initiatives is a dream come true for me!"



**LEAD MAINTENANCE STAFF**

**Dan Seamans**

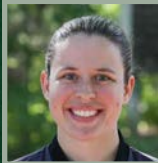
"It is such an honor to be able to help preserve and upgrade the campuses; they are so beautiful. Between nature and wildlife, there is always something to enjoy. The people at KWE are like a family, and I am excited to work in an environment where you are appreciated for the work you do."



**OFFICE MANAGER**

**Morgan Perry**

"I'm looking forward to being back at the Kieve and Wavus campuses and being a part of the organization that helped shape who I am today."



**FOOD SERVICES LEAD COOK**

**Shannon Richards**

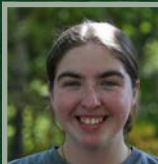
"I'm excited to work with kids again in a leadership-building community."



**FOOD SERVICES LEAD COOK**

**Aaron Holland**

"I chose KWE because it is an exciting opportunity to work with enthusiastic people in a beautiful location."



**LEAD CLEANING STAFF**

**Sophie Storey**

"I'm looking forward to the Kennedy Learning Center being in full force, and I'm excited to see what the rest of the year brings. I hope to have lots of laughs and smiles, build new skills, work with teammates, and have a fantastic time!"

# Paddle & Pines

We're grateful to our Paddle & Pines friends for making arrangements to leave a planned gift, ensuring that our mission will continue to make an impact beyond our lifetimes.

Dave <sup>†</sup> & Louise Abbot  
 Franny & Franny Abbott  
 Evan & Mallory Atherton  
 Tom & Ella Auchincloss  
 Marjorie Wing Berry  
 Bob <sup>†</sup> & Sally Bishop  
 Steve & Kathryn Brackett  
 William <sup>†</sup> & Charly Brown  
 Sandy & Sissy Buck  
 Whip <sup>†</sup> & Sally <sup>†</sup> Buck  
 Bob & Suzanne Burrows  
 Frank Carey <sup>†</sup>  
 Chip & Sarah Carpenter  
 Clayton Chambliss <sup>†</sup>  
 Noland Chambliss  
 Morgan & Sonia Churchman  
 Duncan & Christina Cocroft  
 Jay <sup>†</sup> & Misty Cooper  
 Charlie & Posy Dana  
 Jon & Mary Davis  
 Woody & Robin Davis  
 Max & Becca Dinning  
 Chris & Kolleen Dougherty  
 Candace Dyal <sup>†</sup>  
 Denny & MaryLynn Emory  
 Candice Falloon  
 Hill & Susan Ferguson  
 David & Carol Ann Fulmer  
 Larry <sup>†</sup> & Marilyn Gardner  
 John Gassett & Jackie Jones  
 Matt Gault <sup>†</sup>  
 Joan Gedney <sup>†</sup>  
 Roger & Betsy Hall  
 Adam & Erin Haselkorn  
 Morrie & Fenella Heckscher  
 Daren & Justyna Hudson  
 Al <sup>†</sup> & Jan Ireton  
 Pam & Eric Jensen  
 Bill & Pat Jessup  
 Laura & Joel Kaplan  
 Sam & Kate Kaplan  
 Ruth Keans <sup>†</sup>  
 Dick <sup>†</sup> & Nancy Kennedy  
 Henry & B.J. Kennedy  
 Sam & Sarah Kennedy

Jeremy & Diana LaCasse  
 Mary Lansing  
 Bain Lee <sup>†</sup>  
 Ernie Marriner <sup>†</sup>  
 Doug & Hanne Maxwell  
 Matt & Sarah McKenna  
 Carl Meier  
 Collie Moller <sup>†</sup>  
 Walter & Kate Morris  
 Gardner & Diana Mundy  
 Caroline Newcomb  
 Tyler Pace & Mims Montgomery  
 Lisa Parker  
 Ollie & Barb Parker  
 John <sup>†</sup> & Meg <sup>†</sup> Peacock  
 Dev & Debbie Phelps  
 Bo & Lynne Preston  
 Katie & Aiden Redmond  
 Charlie & Annie Richardson  
 Ency Richardson <sup>†</sup>  
 Hugh Riddleberger & Louise McIlhenny  
 Helen Roberts <sup>†</sup>  
 Mark & Eleanor <sup>†</sup> Robinson  
 Cliff <sup>†</sup> & Susan Russell  
 Frank Saunders <sup>†</sup>  
 Sheila Shorr  
 Loren & Joanne Southern  
 Carol Stout <sup>†</sup>  
 Muffy Stuart  
 Doug & Linda Tawse  
 Rob & Anju Tawse  
 Dixon & Gail Thayer  
 Steve Thomas & Evy Blum  
 Tom Townsend <sup>†</sup>  
 Charlie <sup>†</sup> & Daphne Townsend  
 Rob Trippe <sup>†</sup>  
 Ken Van Durand  
 Dave & Kathryn Villano  
 Bill & Margot Walker  
 Charlie & Tia Whinery  
 Betty Willey  
 Russ & Diana Williams  
 Fred Wood <sup>†</sup>  
 Robert & Liz Wood

<sup>†</sup> — The Paddles & Pines seal denotes deceased.

## In Memoriam

Paul Stephen Bryant  
 Madeleine "Maddy" G. Corson  
 Michael Fralich  
 Carole Louise Hanson  
 Richard "Dick" King  
 Margaret "Meg" Peacock  
 Hiram Sibley  
 Becky Underhill  
 Fred Wood

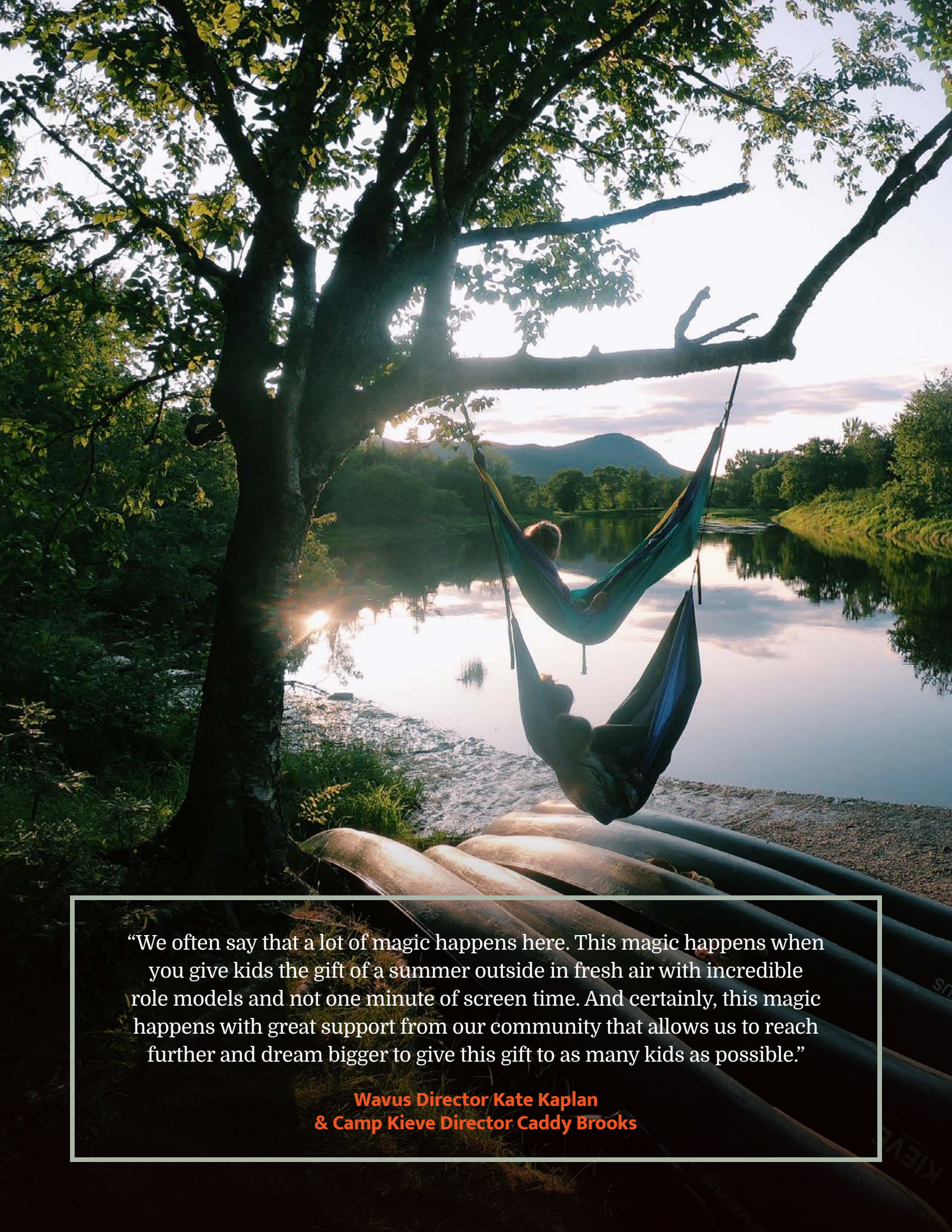
## Board of Trustees

Trustees	Katie Redmond CHAIR
	Chris Dougherty VICE CHAIR
	Matt McKenna TREASURER
	James Blue SECRETARY
	Reid Bolton
	Gretchen Brinkler
	Lisa Brown
	Morgan Churchman
	Lynley Ciorobea
	John Geismar
	Pam Jensen
	Bill Knowlton
	Cliff Muller
	Bree Murray
	Masi Ngidi-Brown
	Gabriela Perez Rocchietti
	Libby Schroeder
	Harrison Stuart
	Mistye Wilson
Trustees Emeriti	Bob Bower
	Sandy Buck
	Jeb Burns
	Tom Haas
	Don Keyser
	Ollie Parker
	Susan Russell
	Dixon Thayer

## MAKING A PLANNED GIFT

A planned gift is one of the most flexible and meaningful ways to support future generations of KWE campers, students, teachers, and community members. To learn more go to [giftplanning.kwe.org](https://giftplanning.kwe.org) or scan the QR code.





“We often say that a lot of magic happens here. This magic happens when you give kids the gift of a summer outside in fresh air with incredible role models and not one minute of screen time. And certainly, this magic happens with great support from our community that allows us to reach further and dream bigger to give this gift to as many kids as possible.”

**Wavus Director Kate Kaplan  
& Camp Kieve Director Caddy Brooks**



A gift to the  
Annual Fund  
by Dec. 31, 2024  
helps bring  
the magic of a  
Kieve Wavus  
education  
to campers  
and students  
regardless of  
circumstance.

---

Make your gift today  
at [kwe.org/give](https://kwe.org/give)  
or scan the code:



# Alumni Updates



**Nick Mead** (Kieve 2003–10) went from canoeing the St. Croix River at Kieve in 2006 (pictured here) to winning a gold medal at the 2024 Summer Olympic Games in Paris! Nick and his teammates won a gold medal in the men's coxless four rowing event, the first for an American team since 1960. He also was voted, along with fellow gold medalist Katie Ledecky, to serve as a flag bearer at the Closing Ceremonies.





**7** **CJ Richardson** (Kieve 2002–10; Kieve Council 2012–16) and **Kiley Ezzell** marry at Kieve on Sept. 1 surrounded by camp friends and family. Congratulations to the happy couple!

**2** **Clara Pritchard** (Wavus 2021–24), **Elijah Mailman** (Kieve 2023–24) and **John Pritchard** (Kieve 2019; 2021–24) together at a Yankees game.

**3** Three Kieve generations! **John Seamans** (Kieve 1970–72; Kieve Council 1973–76, 1980–81; Kieve Parent 1998–02), Lead Maintenance Staff **Dan Seamans** (Kieve 1998–2002, 2004) and future Kieve camper **Riley Seamans**.



**4** **Greg Spears** (Kieve 1965–69; Wavus Parent 2006–07) and **Genna Costello-Spears** (Wavus 2006–07; Wavus Council 2011–12) run into **Eliza Pohle** (Wavus 2011–16; Wavus Council 2018–19) on the summit of Katahdin on Aug. 3.

**5** **Cullom Walker** (Kieve 1972–74; Kieve Council 1980; Kieve Parent 2000–06, 2009–16) and **Wade York** (Kieve 1970–74) visit campus together on the 50th anniversary of their Canadian Wilderness trip.

**6** **John Roy** (Kieve Staff 1984–92; Kieve Food Services director 1995–2000) and **Chris Kelley** (Kieve 1979–82, 1984; Kieve Council 1987–88; Kieve Parent 2012–15) share a shore dinner in Round Pond.

**7** **Harry Ellsworth** (Kieve 2008–11, 2013; Kieve Council 2015–17) **Sam Hanson** (Kieve 1999–2003; Kieve Council 2008–10), and **Andy Conner** (Kieve 2009–11, 2013–14; Kieve Council 2019) meet up for the annual #bloodforbreck drive in Los Angeles, in loving memory of **Breck Denny** (Kieve 1999–01, 2004; Kieve Council 2006–09).

**8** **Maevie Sullivan** (Wavus 2014–19; Wavus Staff 2021) and **Sam Gardiner** (Kieve 2012–18; Kieve Council 2022) hang out at Syracuse University.

**9** Past KWE board chairs and trustees gather to celebrate **Henry Kennedy's** retirement. Including (from left, top row): **Shippen Bright** (Kieve Council 1972–76; Trustee 1984–86), **Mark Robinson** (Kieve Council 1978–79; Trustee 2001–2021), **John Geismar** (Trustee 1999–2024), **Sandy Buck** (Kieve 1966–70; Kieve Council 1971–77; Trustee 1974–2002; Trustee Emeritus 2002–present), **Ollie Parker** (Kieve 1967; Trustee 2001–15; Trustee Emeritus 2015–present), **Bob Bower** (Kieve Council 1980; Trustee 1988–2006; Trustee Emeritus 2006–present), and **Jeb Burns** (Kieve 1969–70; Trustee 2000–14; Trustee Emeritus 2014–present); (from left, bottom row) **Tom Haas** (Kieve Staff 1972–74; Trustee 1974–2002; Trustee Emeritus 2002–present), **Henry Kennedy** (Kieve 1967–72; Kieve Council 1973–80; Trustee 1985–89; KWE Executive Director 1990–2022; Executive Director Emeritus 2022–present), and **Dixon Thayer** (Kieve 1961–64; Kieve Staff 1970; Trustee 2009–2021; Trustee Emeritus 2021–present).



# Future Campers





**1** President & CEO **Sam Kennedy** (Kieve 1995–2002; KW West 2003; Kieve Council 2005–08, 2010) and Healthcare & Risk Director **Sarah Kennedy** welcomed future camper **Maeve Elizabeth Kennedy** during a spring snowstorm. Born on April 3, just like her dad! Wavus 2032!

**2** **Nate** (Kieve 2003–08; KW West 2009; Kieve Council 2011–12) and **Sawyer Kaplan** welcomed future camper **Molly Kaplan** on March 23, 2024! Wavus 2032!

**3** **Mike Mesrobian** (Kieve 1999–04; Kieve Council 2007–10) and **Melissa Yowell** welcomed future camper **Ben Mesrobian** on March 23, 2024! Kieve 2032!

**4** **Chris Richardson** (Kieve 2003–09) and **Henrietta Goelet** welcomed future camper **James Roddy Richardson** on April 4, 2024! Kieve 2032!

**5** **Evan** (Kieve 2006–08; KW West 2009; Kieve Council 2011–14; 2018–19; 2021; Asst. Director Waterfront 2015) and **Becky Kantor** welcomed future camper **Shiloh Kantor** on March 22, 2024! Wavus 2032!

**6** **Cole Phillips** (Kieve Council 2012–17) and **Sasha Phillips** welcomed future camper **Jackson Phillips** on August 13, 2024! Kieve 2032!

**7** **Cullom** (Kieve 2000–06; KW West 2007; Kieve Council 2008–09 and 2011) and **Kinnon Walker** welcomed **Chapman “Chap” Carnes Walker** on April 11, 2024! Kieve 2032!

**8** **Caroline** (Wavus Council 2008) and **John Ogden** welcomed future camper **John “Jack” Alexander Ogden** on April 12, 2024! Kieve 2032!

**9** **Page Riley** (Science 1997–98, Kieve Staff 2007–08) and **James Leach** welcomed **Callum Riley** on July 31, 2024! Kieve 2033!

**10** **Ellie (Weickert) Mahoney** (Wavus 2006–09; KW West 2010) and **Andrew Mahoney** welcomed future camper **Madeline Mahoney** on November 14, 2023! Wavus 2032!

**11** **Julia (Welter)** (Wavus Council 2011–14) and **Greg DeWitt** welcomed future camper **Cecilia DeWitt** on June 30, 2024! Wavus 2032!

**12** **Margie (Gribbell)** (Girls Science 2000; Kieve Council 2005–06; Wavus Council 2006–07) and **Travis McLain** welcomed future camper **Blaise Reynolds McLain** on April 16, 2024! Kieve 2032!

**13** **Ike** (Kieve 2000–01, 2003; Kieve Council 2007–09) and **Kathryn Perkins** welcomed future camper **Louise Evarts Perkins** on January 16, 2024! Wavus 2032!

Kieve Wavus Education, Inc.  
PO Box 169  
Nobleboro, ME 04555  
207-563-5172  
[kwe.org](http://kwe.org)

ADDRESS CORRECTION REQUESTED

NON-PROFIT ORG  
U.S. POSTAGE PAID  
NEWCASTLE, MAINE  
PERMIT NO. 11

**KIEVE WAVUS**  
EDUCATION



[kievewavus](https://www.instagram.com/kievewavus)



[kievewavuseducationinc](https://www.facebook.com/kievewavuseducationinc)



## BUILDING KWE'S PROFESSIONAL NETWORK

The commitment, creativity, and responsibility that comes from working summers at Kieve and Wavus fosters a set of "real-world skills" that an internship can't teach. That sort of experience, paired with school-year internships in industries our counselors are passionate about, will no doubt set them up for success.

If you think your company might benefit from hiring one of our outstanding counselors as a school-year intern, or if you're interested in being a career resource in any way, please reach out to Alumni Engagement & Campaign Coordinator John McDevitt at [johnmcdevitt@kwe.org](mailto:johnmcdevitt@kwe.org). You're not just helping our counselors. You're ensuring our campers have role models who are experienced and prepared for the enormous responsibility of leading Kieve and Wavus.